

SKETCHURE  
MATTER OF INTERIOR

by ZF HOLDING

# COMMERCIAL PORTFOLIO



*Commercial spaces do more than function, they inspire.  
We design **workspaces** that fuel efficiency, **retail spaces** that elevate customer  
experience, and **hospitality venues** that leave a lasting impression.*





We design workspaces that spark efficiency and collaboration while reflecting your brand's identity.



# OFFICE DESIGN

# EJADA

SYSTEMS COMPANY LIMITED

**LOCATION :** NEW CAIRO, EGYPT.

**INDUSTRY :** INFORMATION TECHNOLOGY

**TYPE :** ADMINISTRATIVE BUILDING

**SCOPE :** DESIGN & EXECUTION

**AREA :** 7800 m<sup>2</sup> – 6 floors



نخطو معًا للمستقبل  
experience next

**CAIRO HQ**



نخطو معاً للمستقبل  
experience next

**EJADA**

LOCATION: NEW CAIRO.

This project was built around the idea of a 'space journey' to create futuristic work environment that feels innovative and intelligently designed. We focused on separated zoning, structured layouts, and a neutral palette to create clarity and flow. Each level plays a part in the experience, guiding movement and supporting focus and creativity, reflecting EJADA's identity; now and next.





EJADA

Ground floor





EJADA

Ground floor





EJADA

Ground floor





EJADA

Ground floor





EJADA

Ground floor





EJADA

Ground floor





EJADA

Ground floor





EJADA

Ground floor





EJADA

Ground floor





EJADA

Ground floor





EJADA

First floor





EJADA

First floor





EJADA

First floor





EJADA

Second floor





EJADA

Second floor





EJADA

Second floor





EJADA

Second floor





EJADA

Second floor





EJADA

Second floor





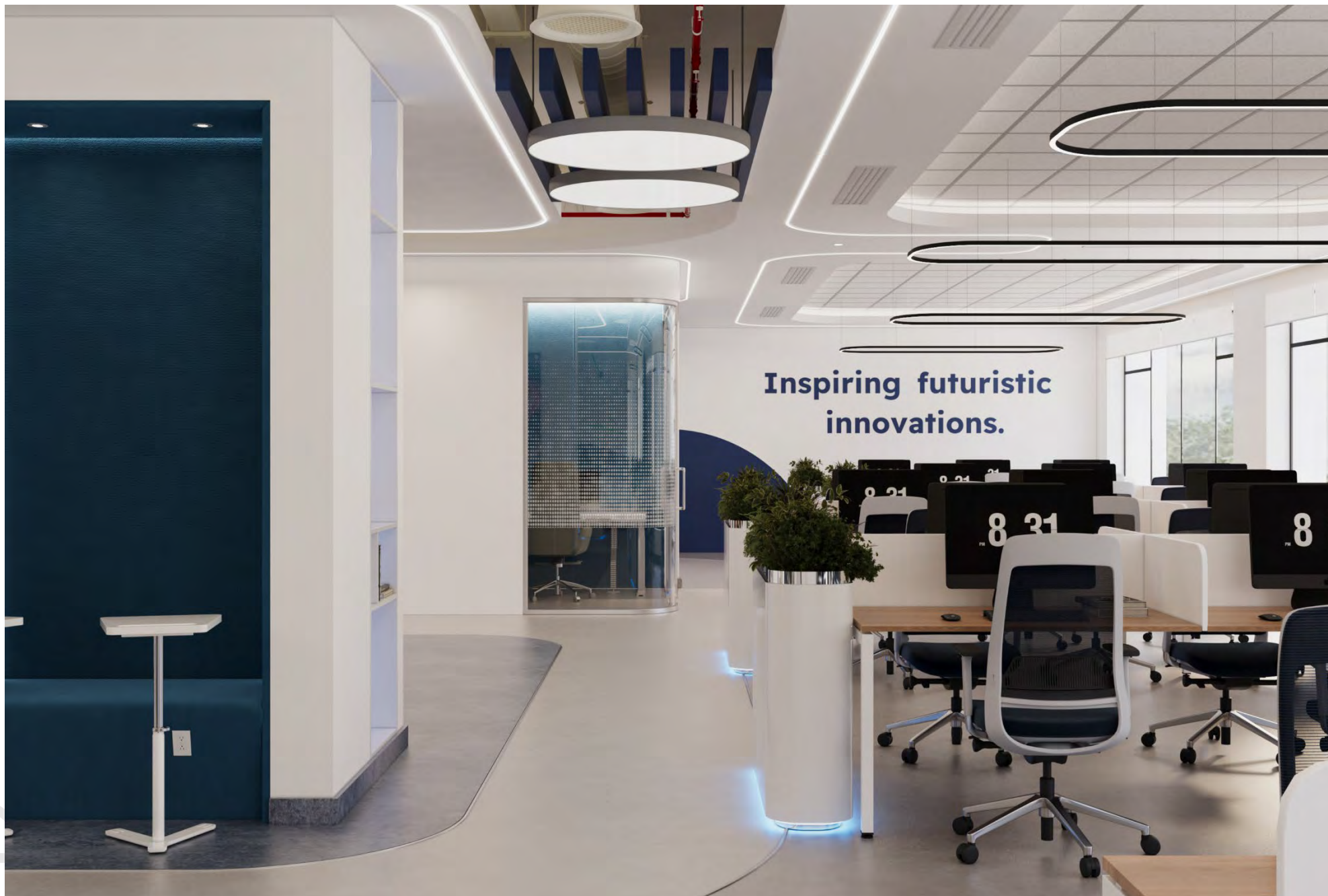
EJADA

Second floor



EJADA

Second floor





EJADA

Second floor



EJADA

Second floor





EJADA

Second floor





EJADA

Second floor





EJADA

Second floor





EJADA

Second floor





EJADA

Second floor





EJADA

Second floor





EJADA

Second floor





EJADA

Second floor





EJADA

Second floor





EJADA

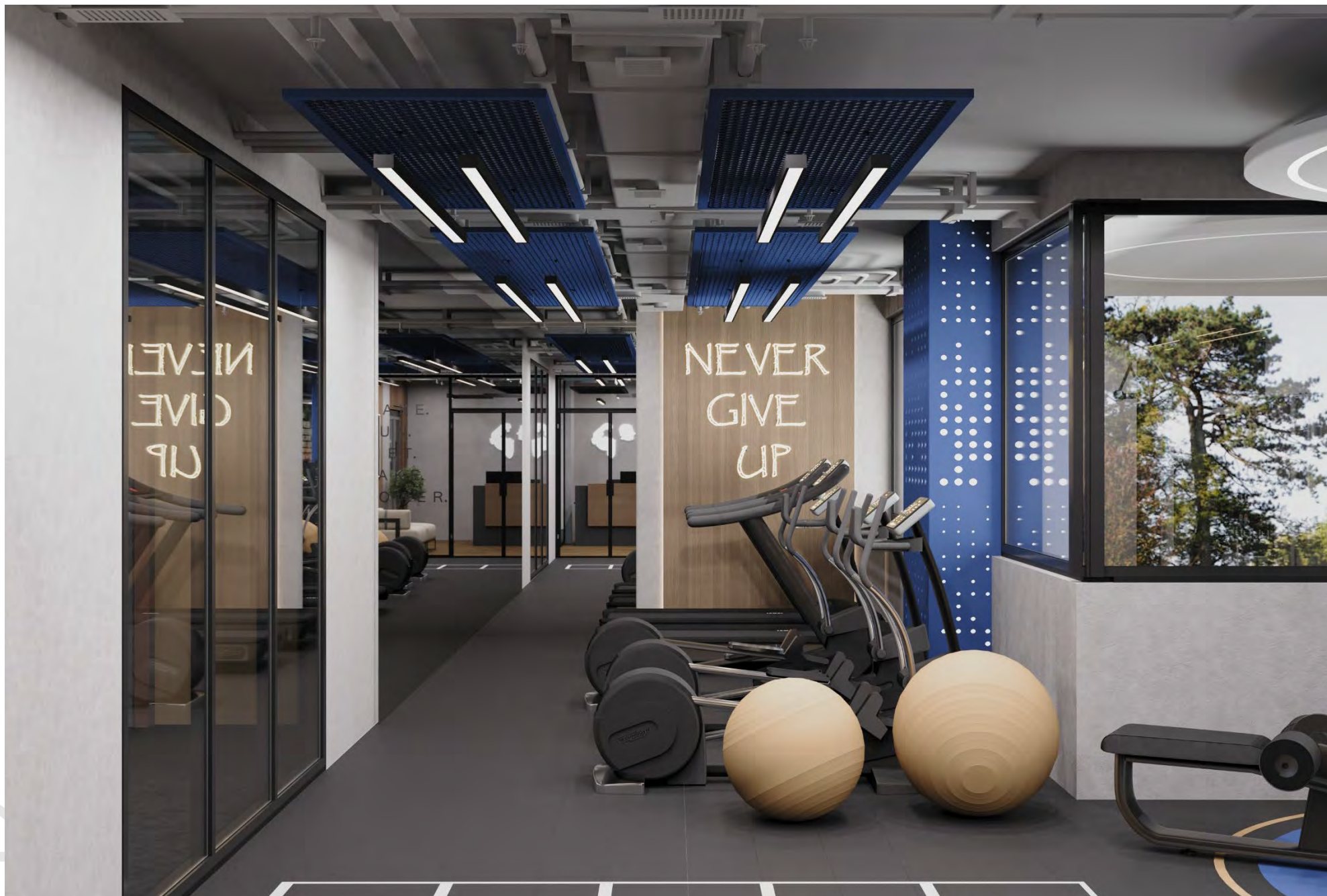
Gym





EJADA

Gym





EJADA

Gym









EJADA

Roof





EJADA

Roof





EJADA

Atrium





EJADA

Atrium



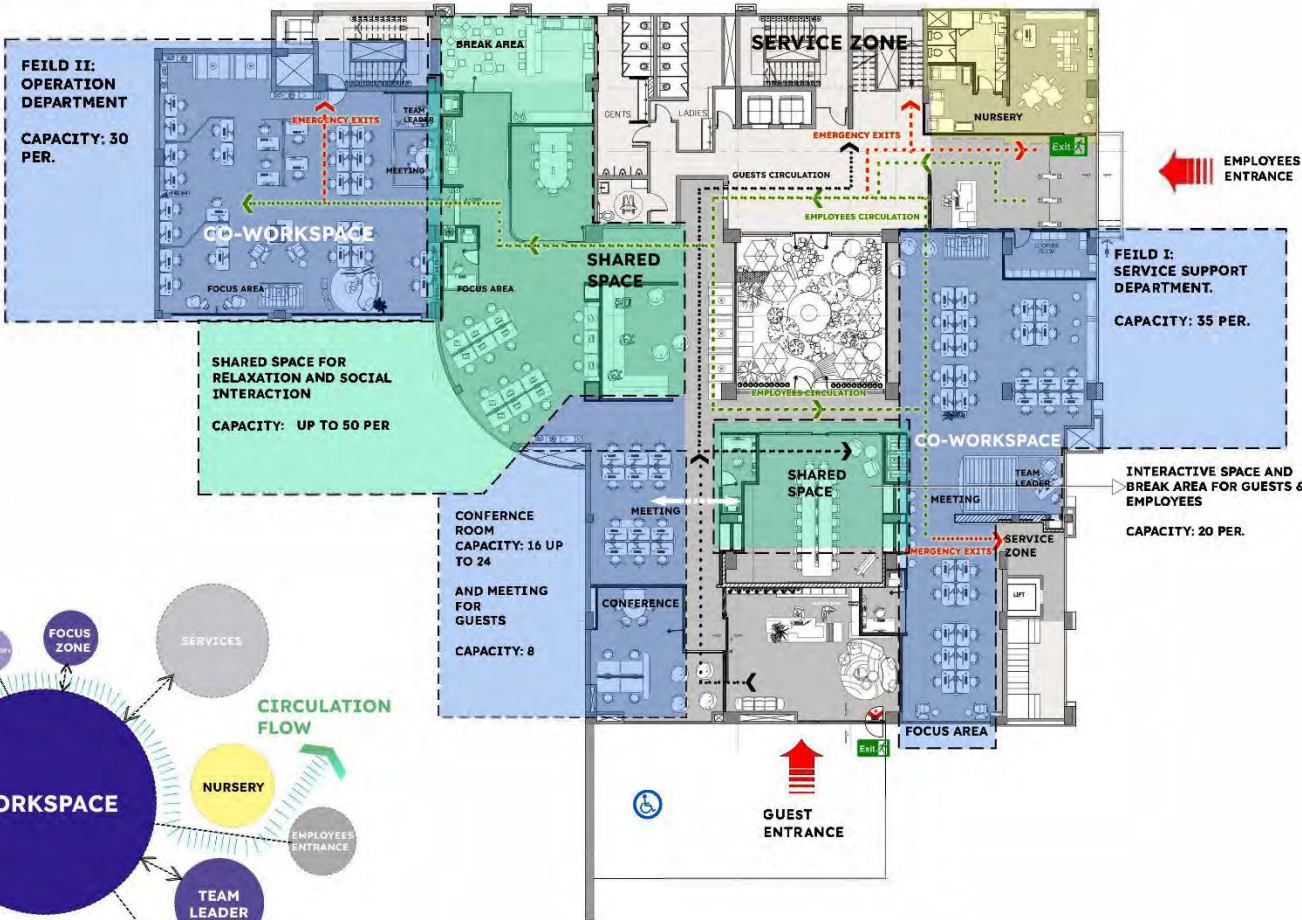
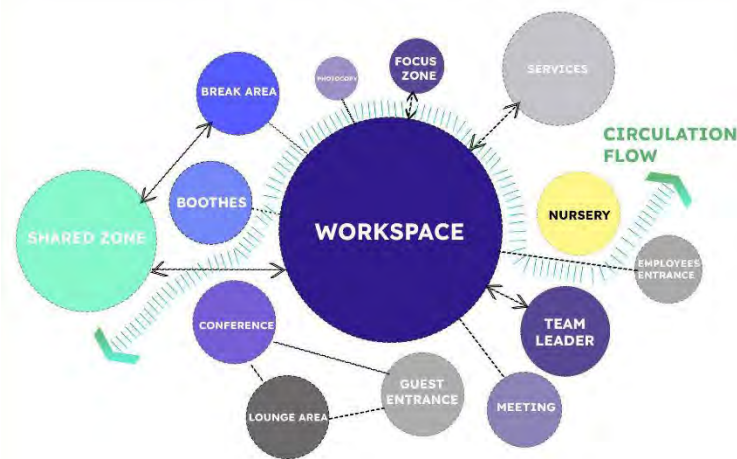


GROUND FLOOR PLAN

KEY PLAN:

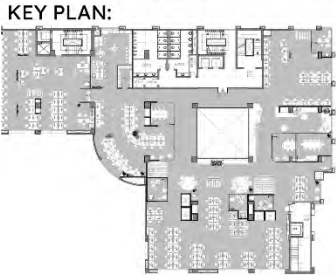
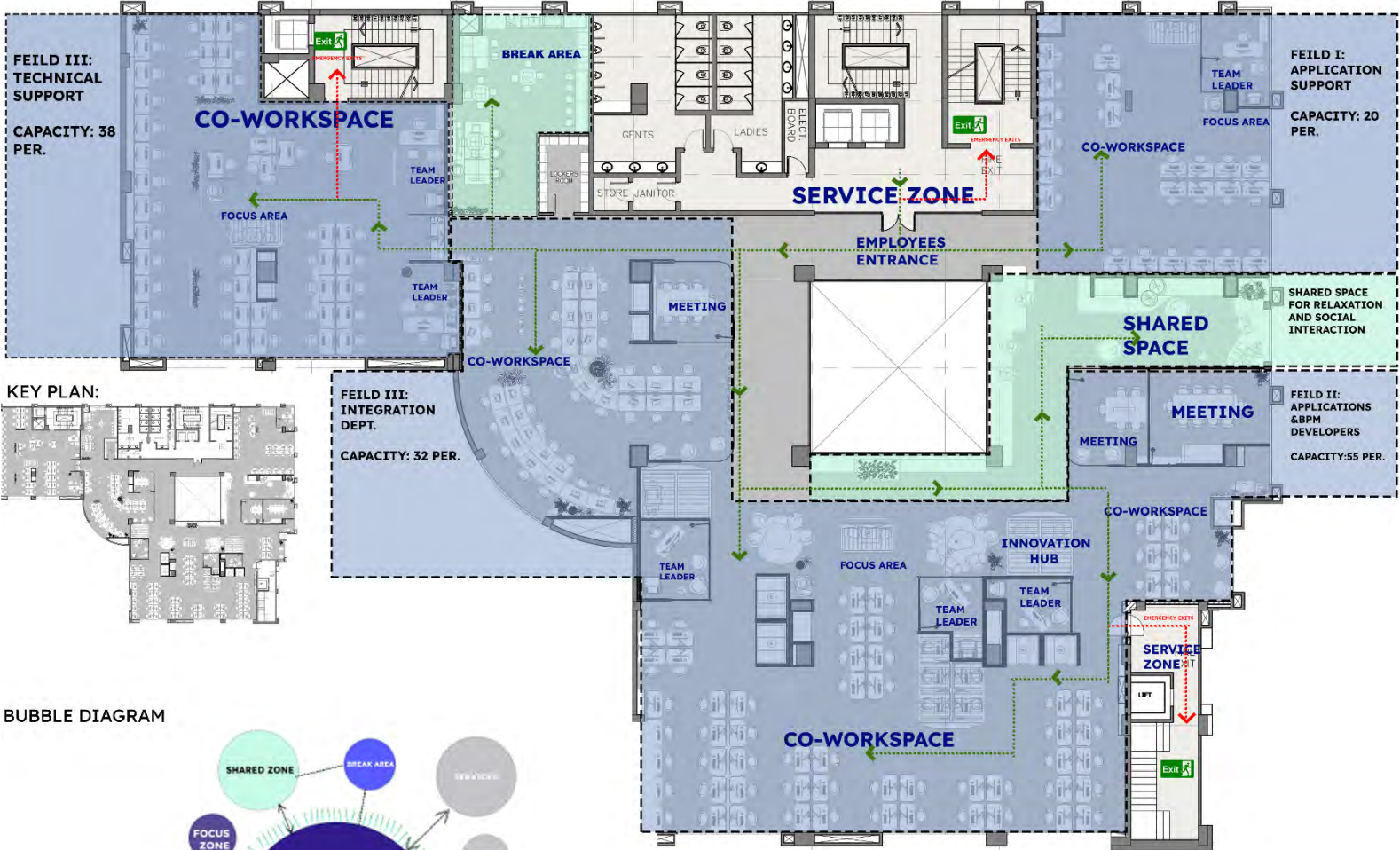


BUBBLE DIAGRAM

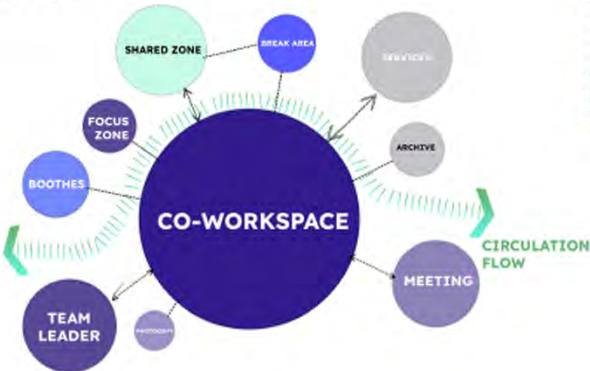




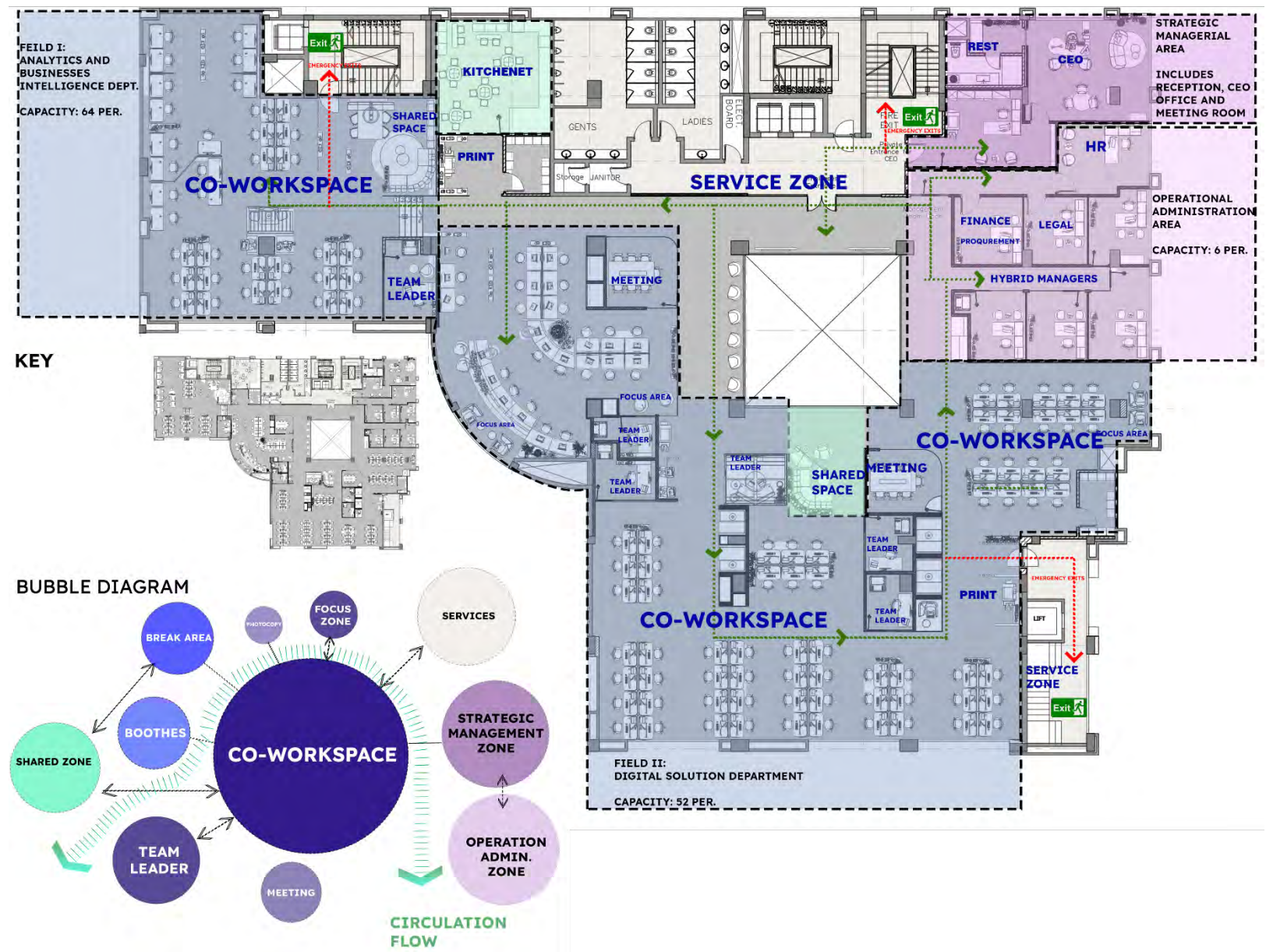
FIRST FLOOR PLAN



BUBBLE DIAGRAM

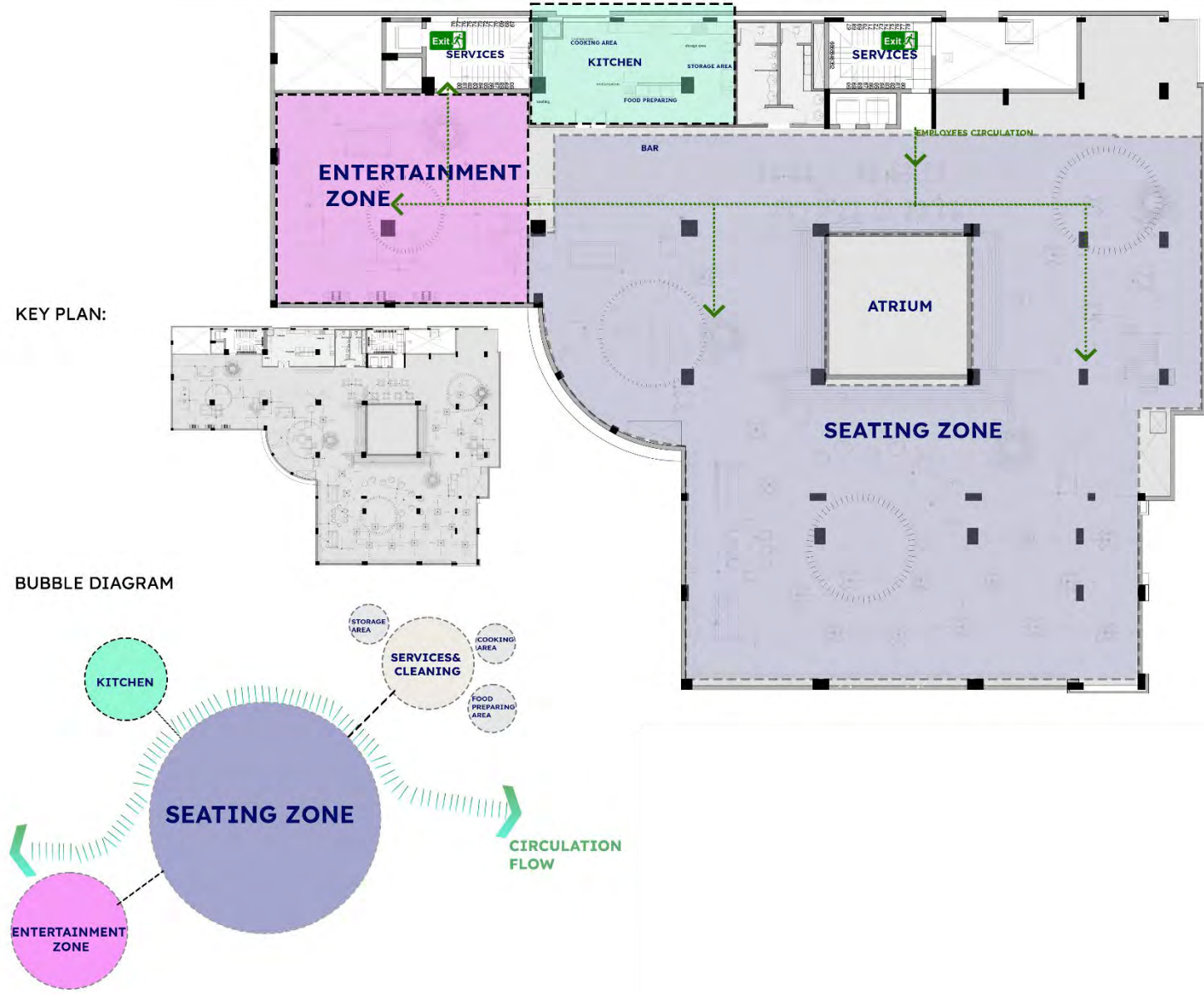






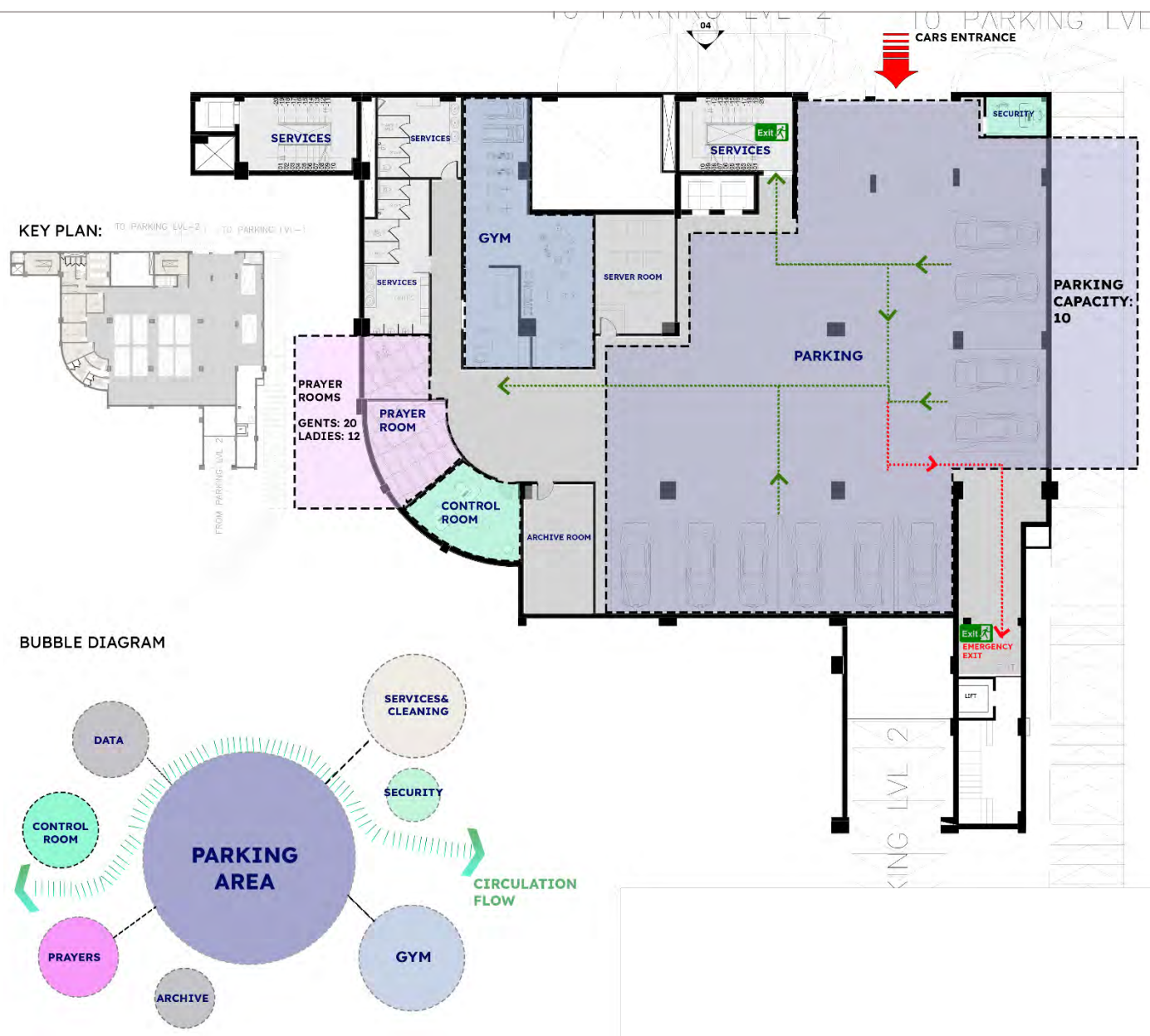


# ROOF FLOOR PLAN



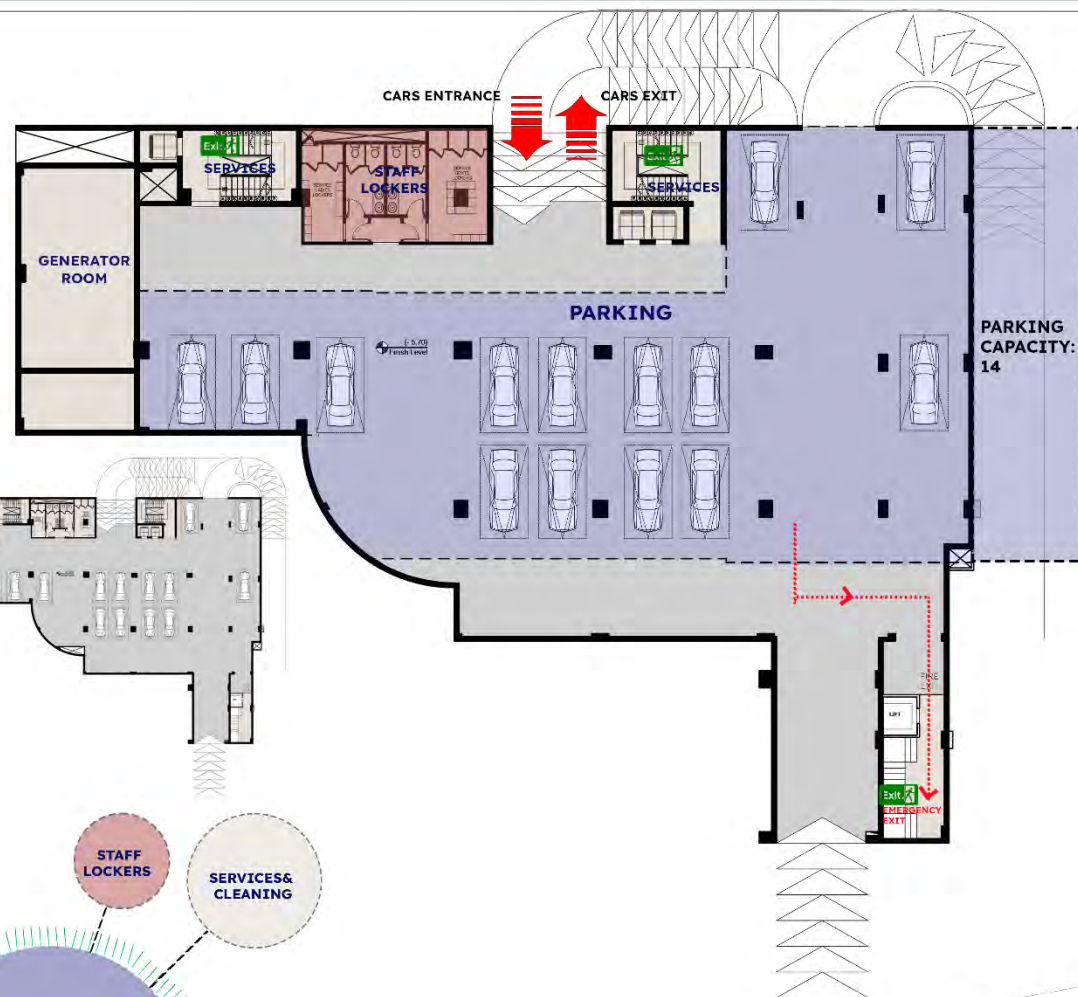
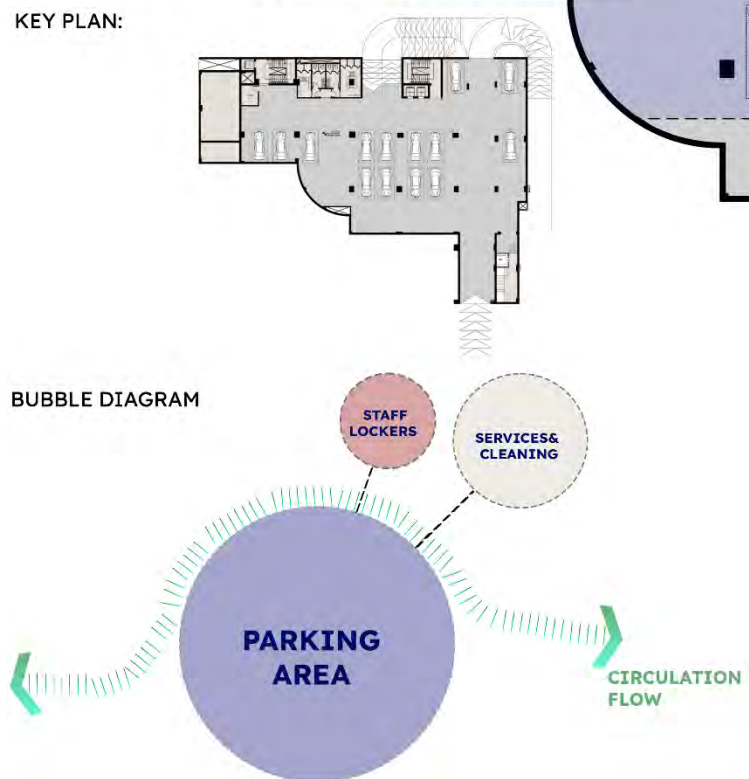


**KEY PLAN:** TO PARKING (LVL-2) TO PARKING (VL-1)





**KEY PLAN:**





# EJADA

SYSTEMS COMPANY LIMITED

**LOCATION :** SAN STEFANO, ALEXANDRIA

**INDUSTRY :** INFORMATION TECHNOLOGY

**TYPE :** ADMINISTRATIVE BUILDING

**SCOPE :** DESIGN & EXECUTION

**AREA :** 3600 m2 – 3 floors



نخطو معًا للمستقبل  
experience next

**ALEXANDRIA  
OFFICE BUILDING**





نخطو معاً للمستقبل  
experience next

**EJADA**

LOCATION: SAN STEFANO,  
ALEXANDRIA.

Seeing the innovation and creativity done from our side in EJADA Cairo office design concept, EJADA team awarded SKETCHURE the creation Alexandria office as well. The idea was to maintain the brand identity and character, reflecting the space journey and productive work environment.

















EJADA

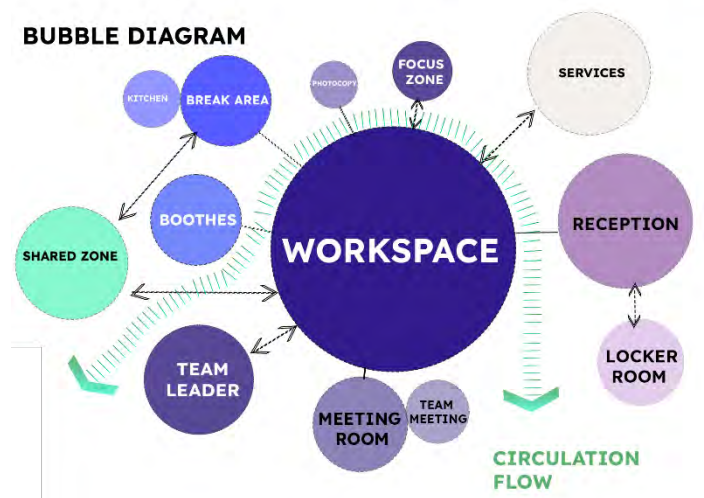
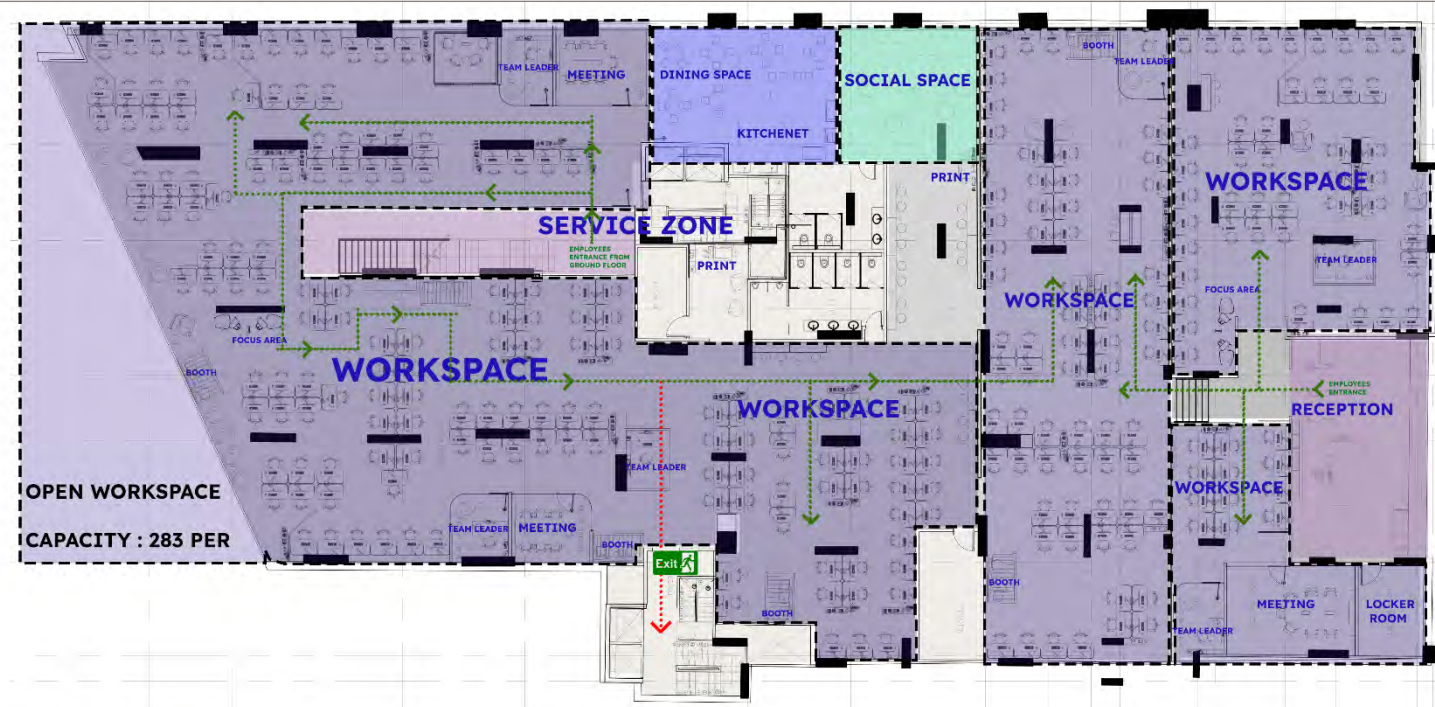
WORK IN PROGRESS

57"





# MEZZANINE FLOOR PLAN

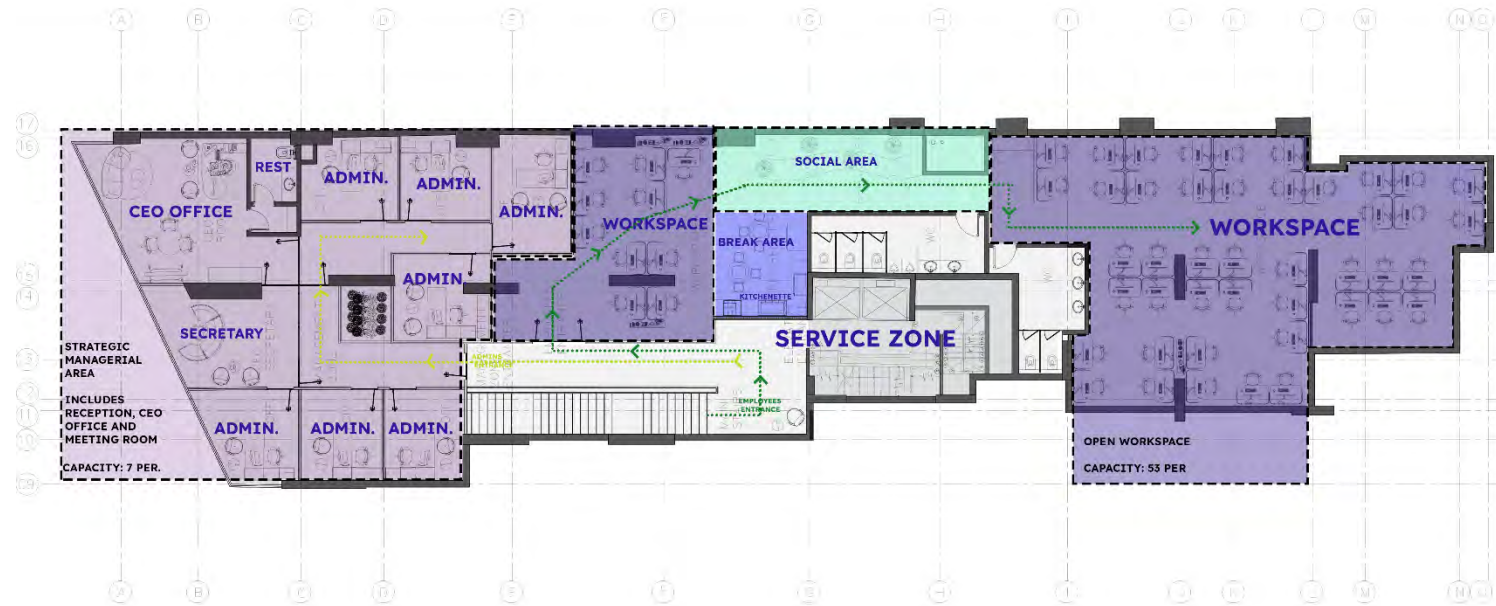


## KEY

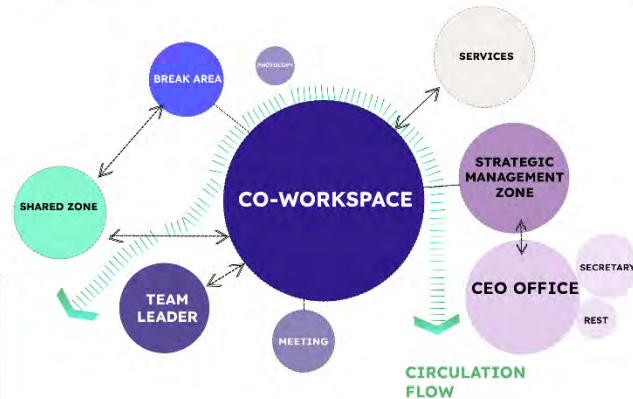




# FIRST FLOOR PLAN



BUBBLE DIAGRAM

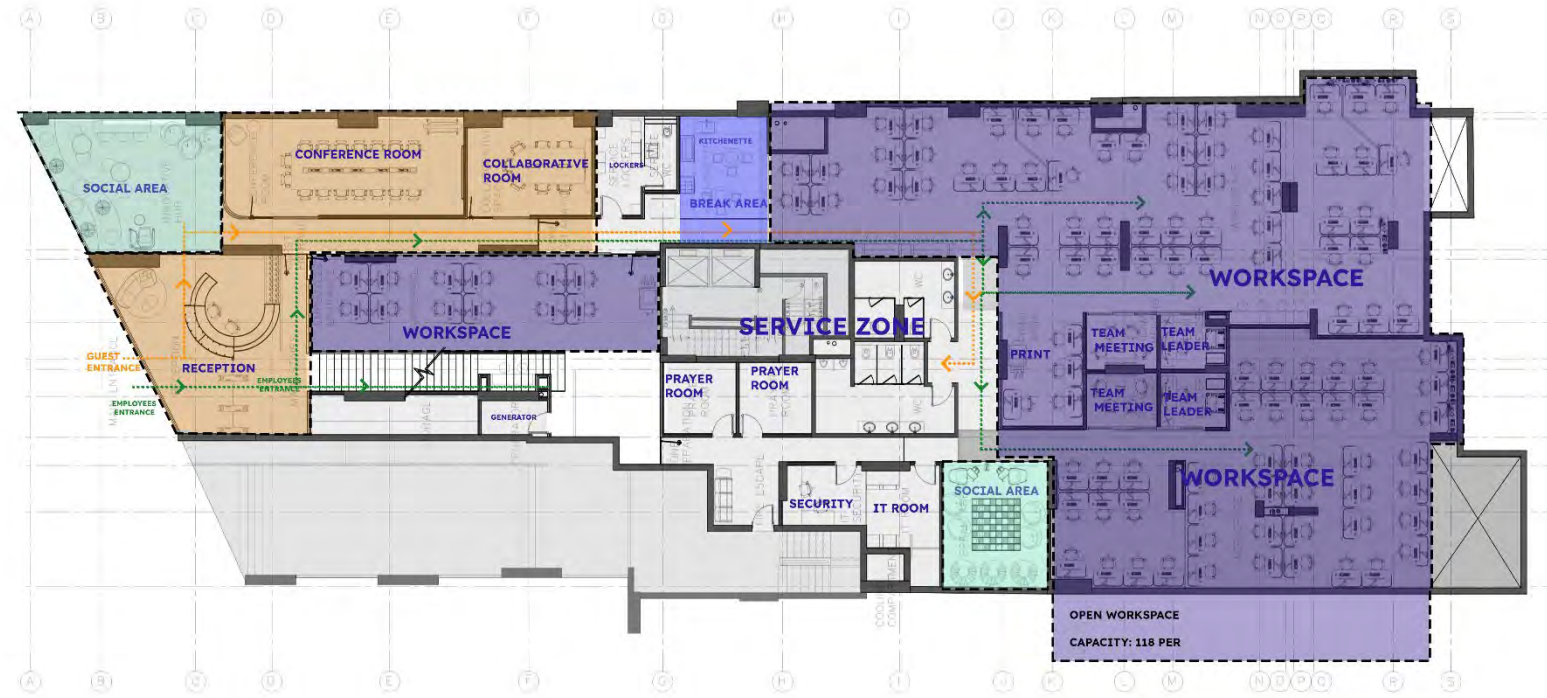


KEY PLAN:

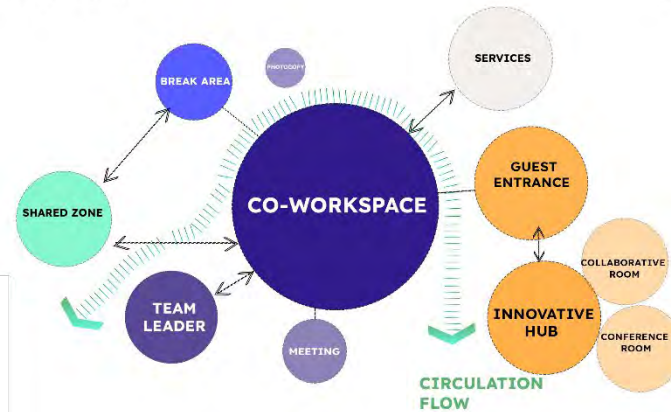




# FIRST FLOOR PLAN



BUBBLE DIAGRAM



KEY PLAN:





# BASHAR SOFT

**LOCATION :** MAADI, CAIRO, EGYPT.

**INDUSTRY :** EMPLOYMENT

**TYPE :** ADMINISTRATIVE BUILDING

**SCOPE :** DESIGN & RENOVATION

**AREA :** 857.2 m<sup>2</sup>



**BASHAR SOFT**

**WUZZUF**

فرصنا  كوم





## BASHAR SOFT

LOCATION: MAADI, EGYPT

For Bashar Soft, we reimagined their office to reflect energy, creativity, and seamless communication. The renovation of the shared basement area offers a dynamic space for guests, events, and informal meetings. We used vibrant, energy-boosting colors to create an environment that feels both alive and productive. Acoustic walls ensure a noise-free experience while emphasizing the brand's identity, making this office a hub of creativity and collaboration.



BASHARSOFT

Ground floor  
CEO office













BASHARSOFT

Ground floor  
CEO office





BASHARSOFT

Ground floor

Reception



BASHARSOFT

Ground floor  
Reception





BASHARSOFT

Ground floor

Meeting &  
Collaborative  
hub





BASHARSOFT

Ground floor

Meeting &  
Collaborative  
hub





Basement

Stage 1 &  
Tiered







Basement  
Stage 2















BASHARSOFT

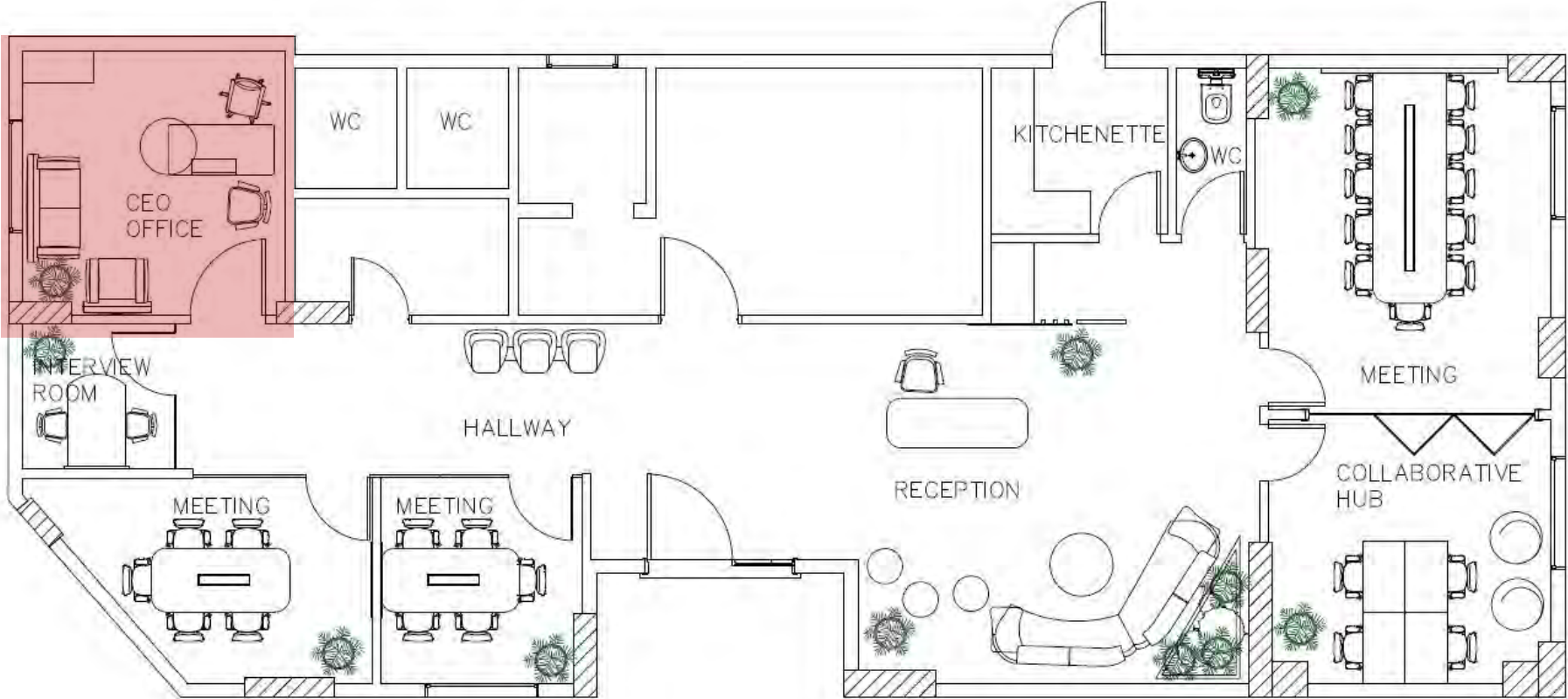
Basement  
Kitchen Area







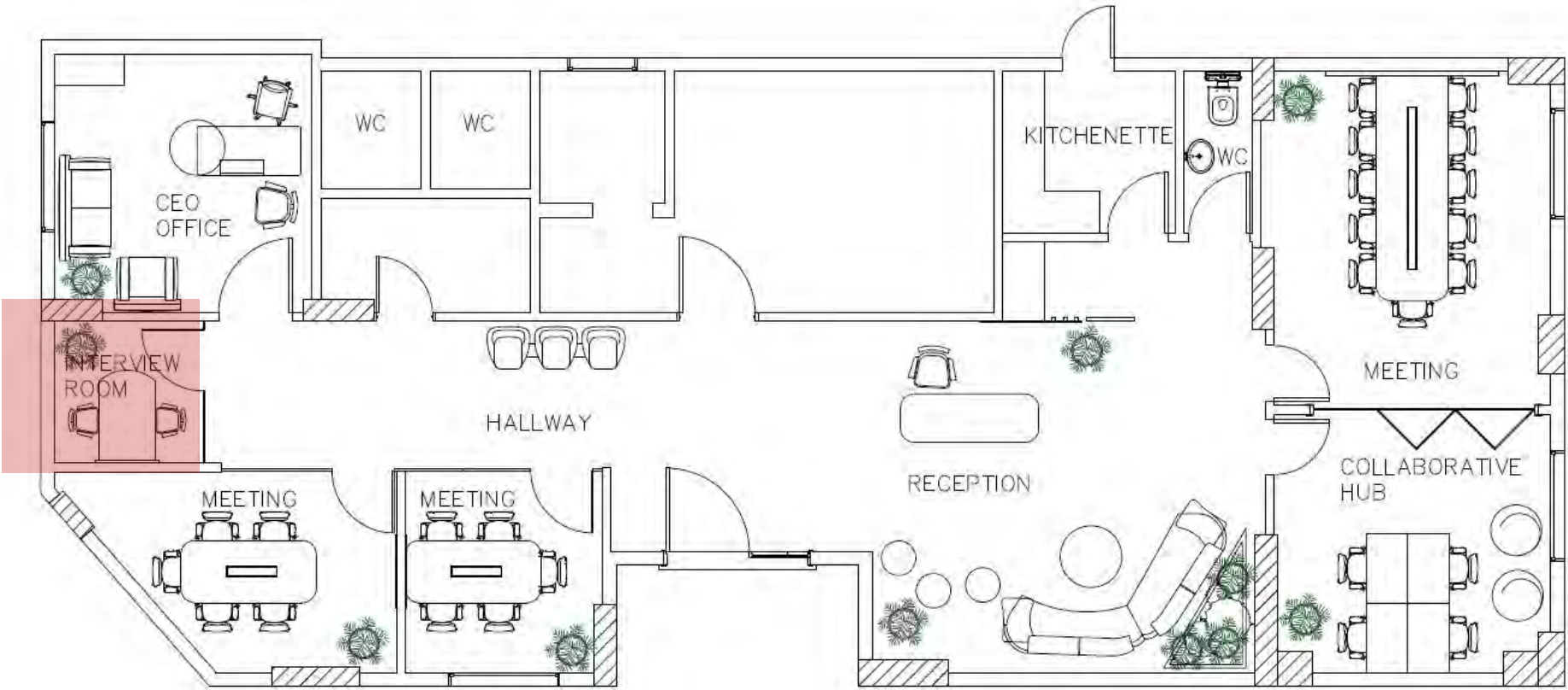
Ground floor  
CEO office



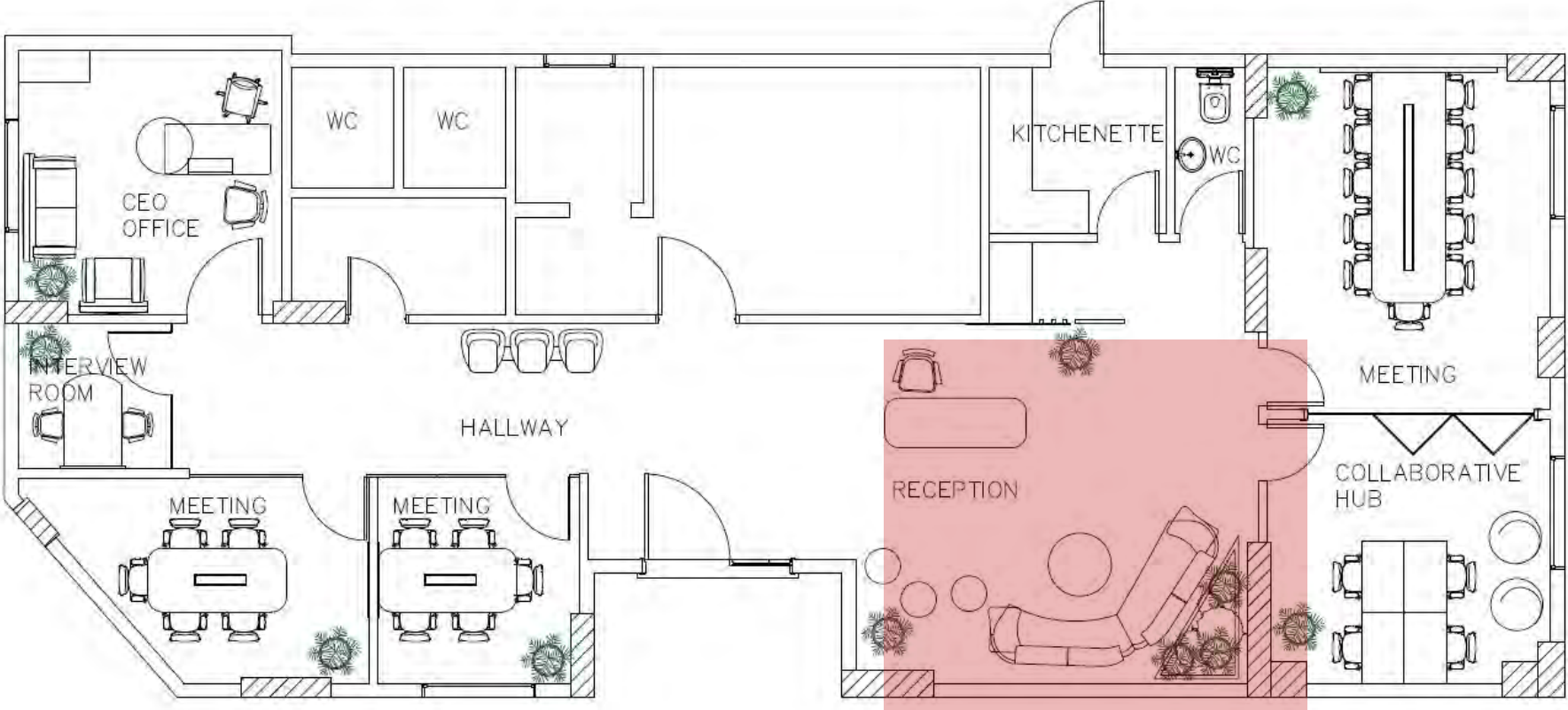


Ground floor

Interview  
room



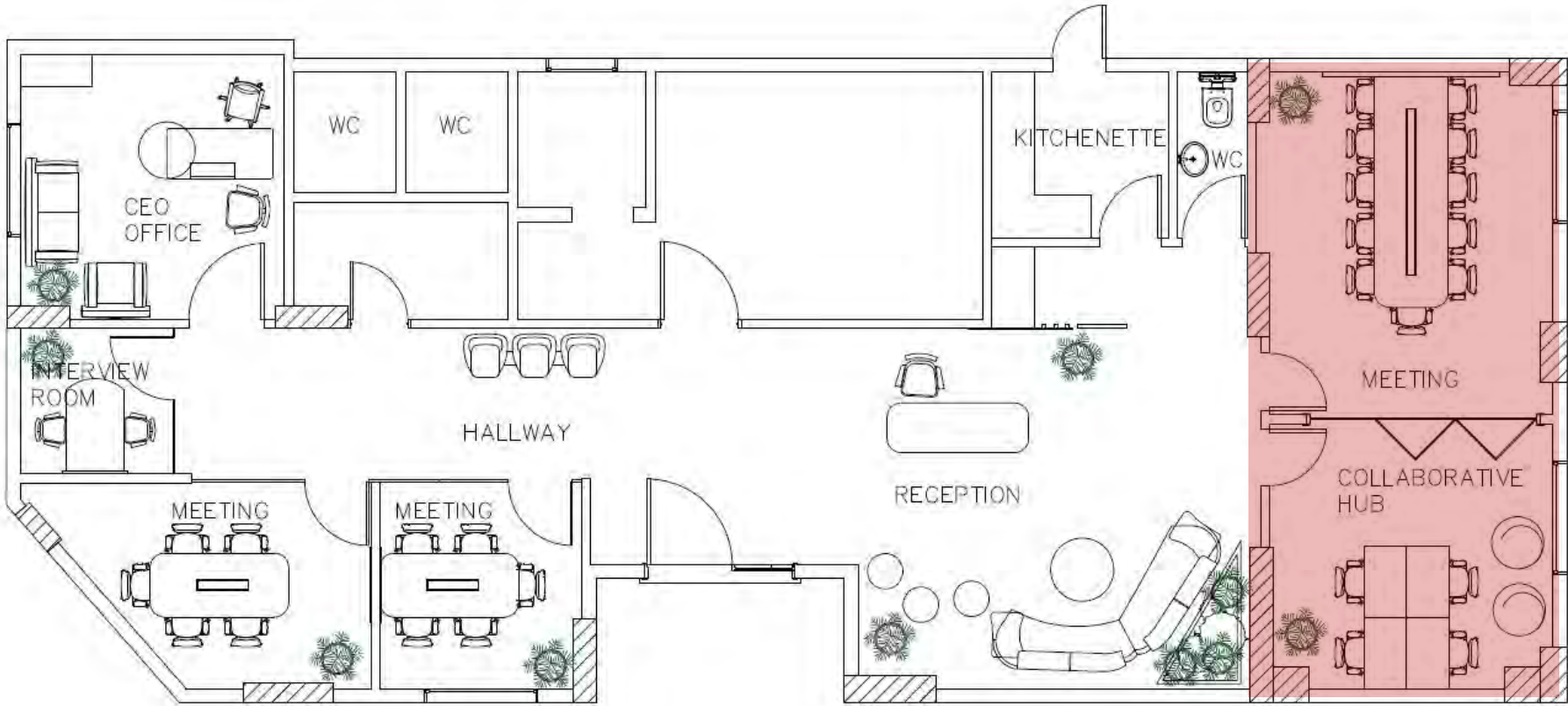
Ground floor  
Reception



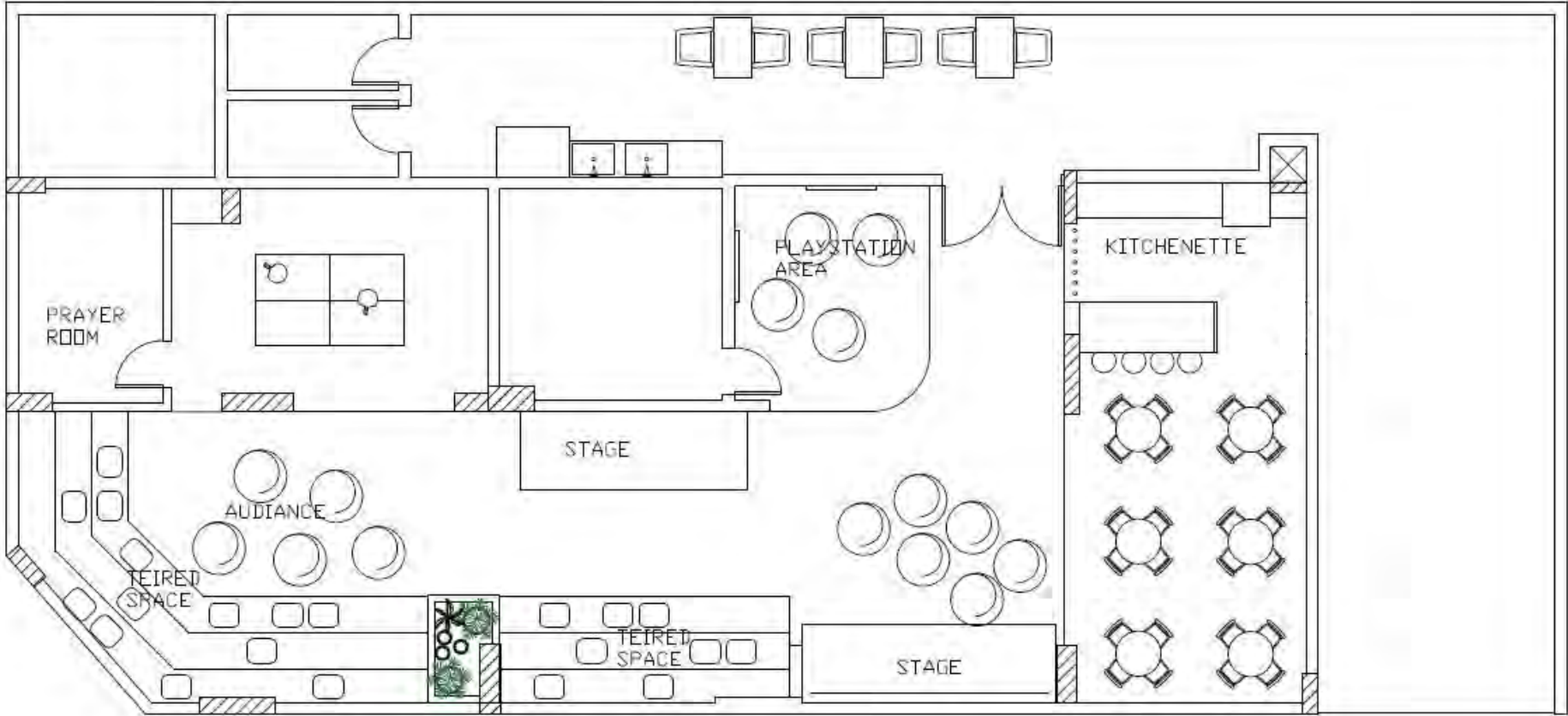


Ground floor

Meeting &  
Collaborative  
hub



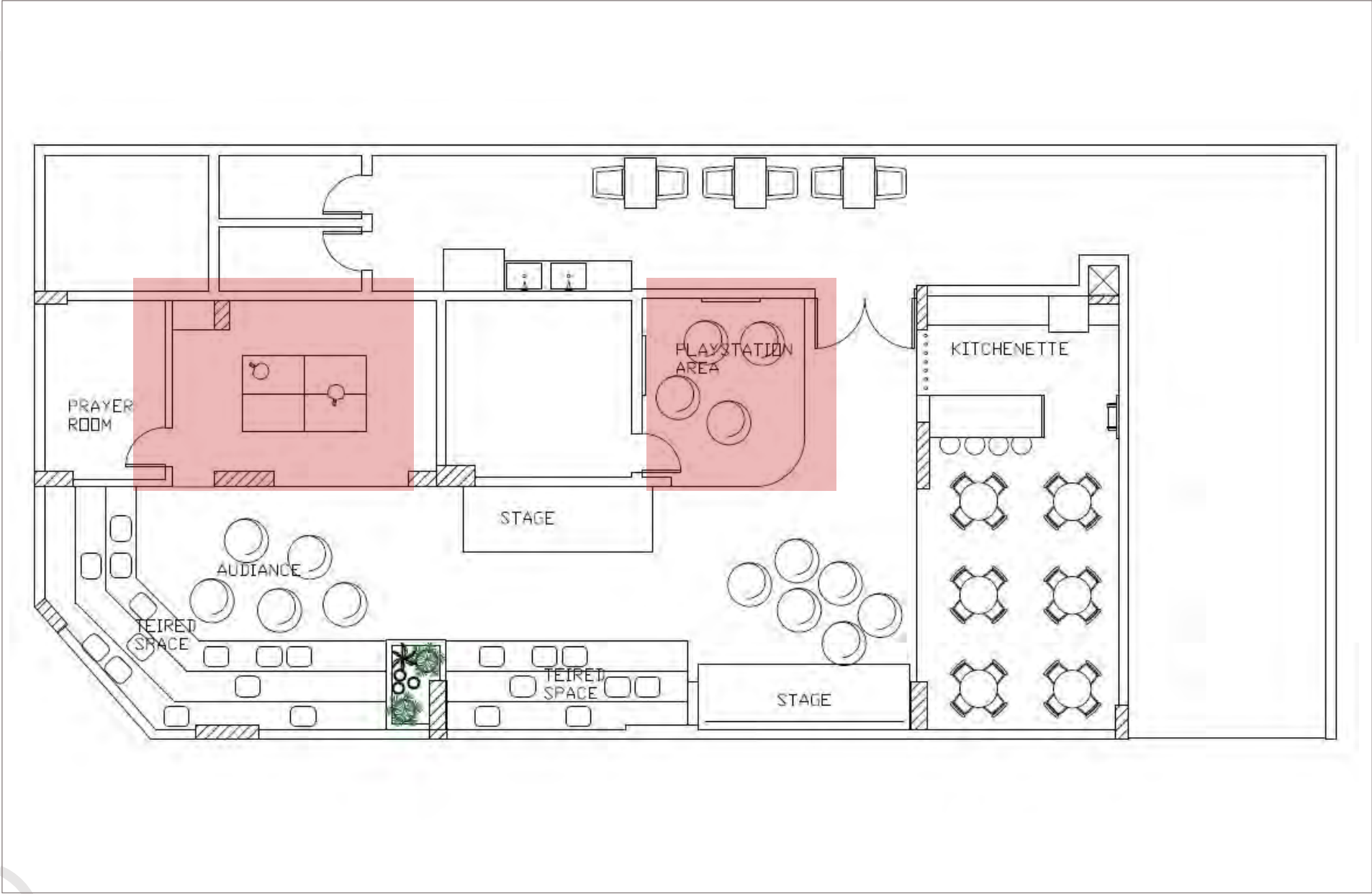
Basement





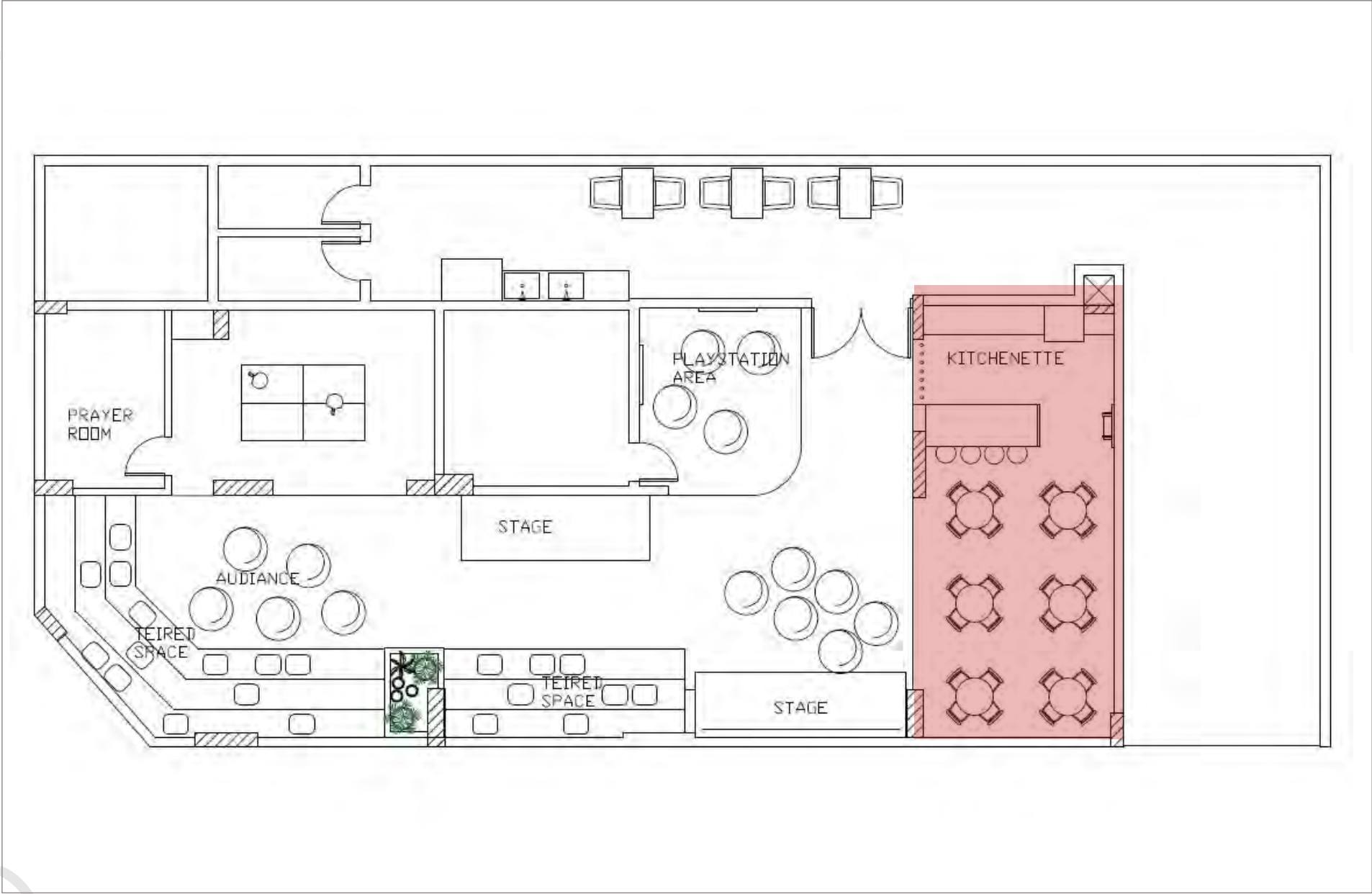
Basement

Playing Area



Basement

Kitchen Area





# WORLD FOOD PROGRAMME

**LOCATION :** MAADI, CAIRO, EGYPT.

**INDUSTRY :** INTERGOVERNMENTAL ORGANIZATION

**TYPE :** ADMINISTRATIVE BUILDING

**SCOPE :** DESIGN, RENOVATION & EXECUTION

**AREA :** 4730 m<sup>2</sup>



**REGIONAL  
OFFICE**



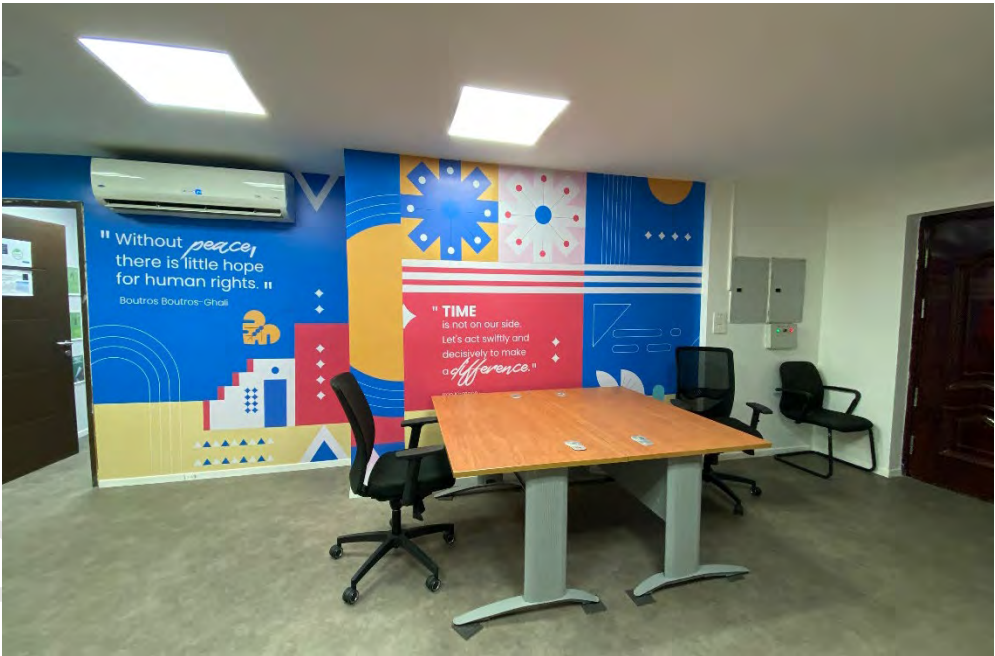
# WORLD FOOD PROGRAMME

LOCATION: MAADI, CAIRO

World Food Programme design centers around the concept of an 'Oasis', creating a calming, refreshing environment for employees. With quiet details, natural tones, and open, breathable spaces, the design aims to bring a sense of peacefulness into the workspace. A place where productivity flows as freely as fresh air.













































# THE EMIRATES GROUP

**LOCATION :** NEW CAIRO

**INDUSTRY :** AVIATION

**TYPE :** OFFICE BUILDING

**SCOPE :** DESIGN, RENOVATION & EXECUTION

**AREA :** 700 m2



**CAIRO HQ**





## THE EMIRATES GROUP

LOCATION: 5A WATERWAY,  
NEW CAIRO

The concept in this project captures the experience of flight; light, fluid, and elevated, while staying grounded in functionality. Elements like 'window flight' wall features imitate the in-air experience, complemented by built-in whiteboards, pin boards, and smart storage to support a smooth day-to-day workflow.







































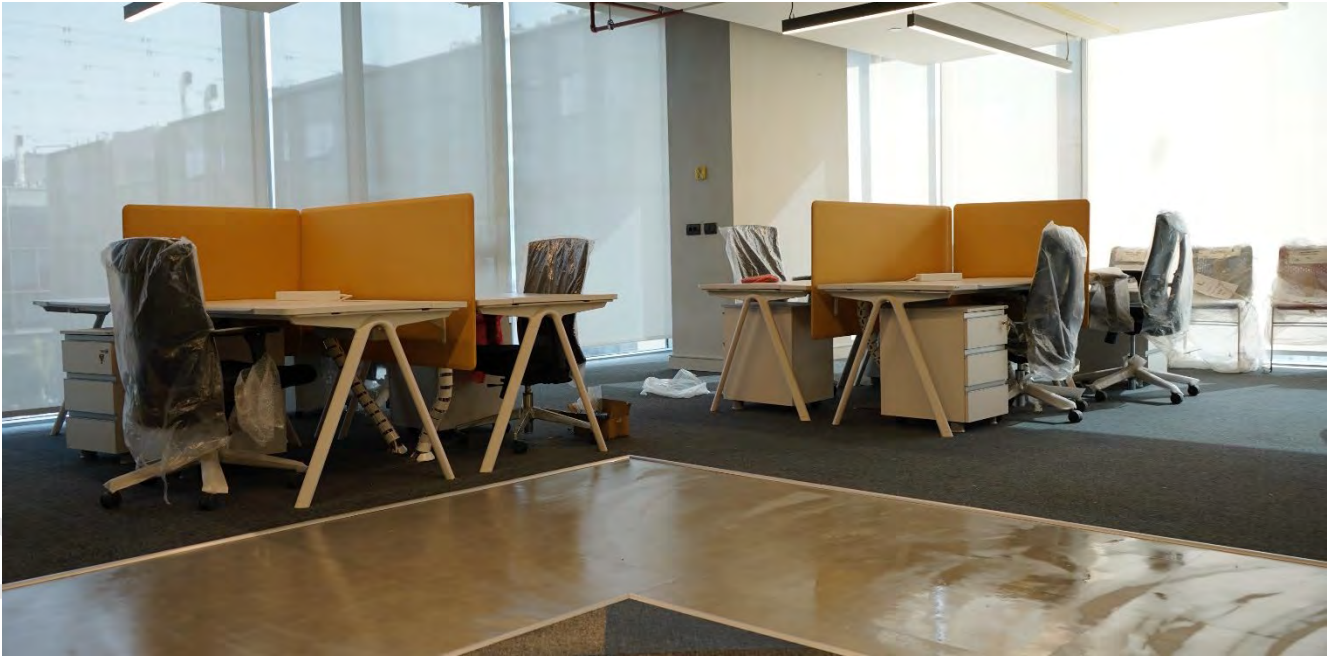


























# EUROPEAN UNION

**LOCATION :** MAADI, CAIRO, EGYPT.

**INDUSTRY :** DIPLOMATIC MISSION

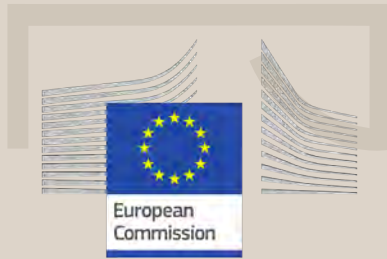
**TYPE :** OFFICE SPACE

**SCOPE :** DESIGN, RENOVATION & FF& E

**AREA :** 180 m<sup>2</sup>



**CAIRO  
OFFICE**



## EUROPEAN UNION OFFICE RENOVATION

LOCATION: NILE CITY TOWERS, MAADI,  
CAIRO

The goal in this project was to reflect EU identity while maintaining employee privacy. Custom partitions, tailored furniture, and integrated storage were paired with acoustic, fire-rated carpets to create a space that's both distinct and function.













# TAMWEEELY

**LOCATION :** NILE CORNICHE, CAIRO, EGYPT

**INDUSTRY :** FUNDING

**TYPE :** COMMERCIAL OFFICE BUILDING

**SCOPE :** BRANDING

**AREA :** 1870 m2



CAIRO HQ

تمويلي  
Tamweely



**TAMWEELY**

LOCATION: NILE CORNICHE  
CAIRO, EGYPT

Tamweely's evolving theme inspired a transformation that reflects the growth and success of small projects turning into large-scale businesses. We blended branding and interior design with playful decor, vibrant wall art, and creative stickers. The space reflects Tamweely's journey, with designs that shift, adapt, and grow, just like the company's ambitious projects.









TAMWEELY

Waiting area















TAMWEELY

CEO office





Conference  
Room



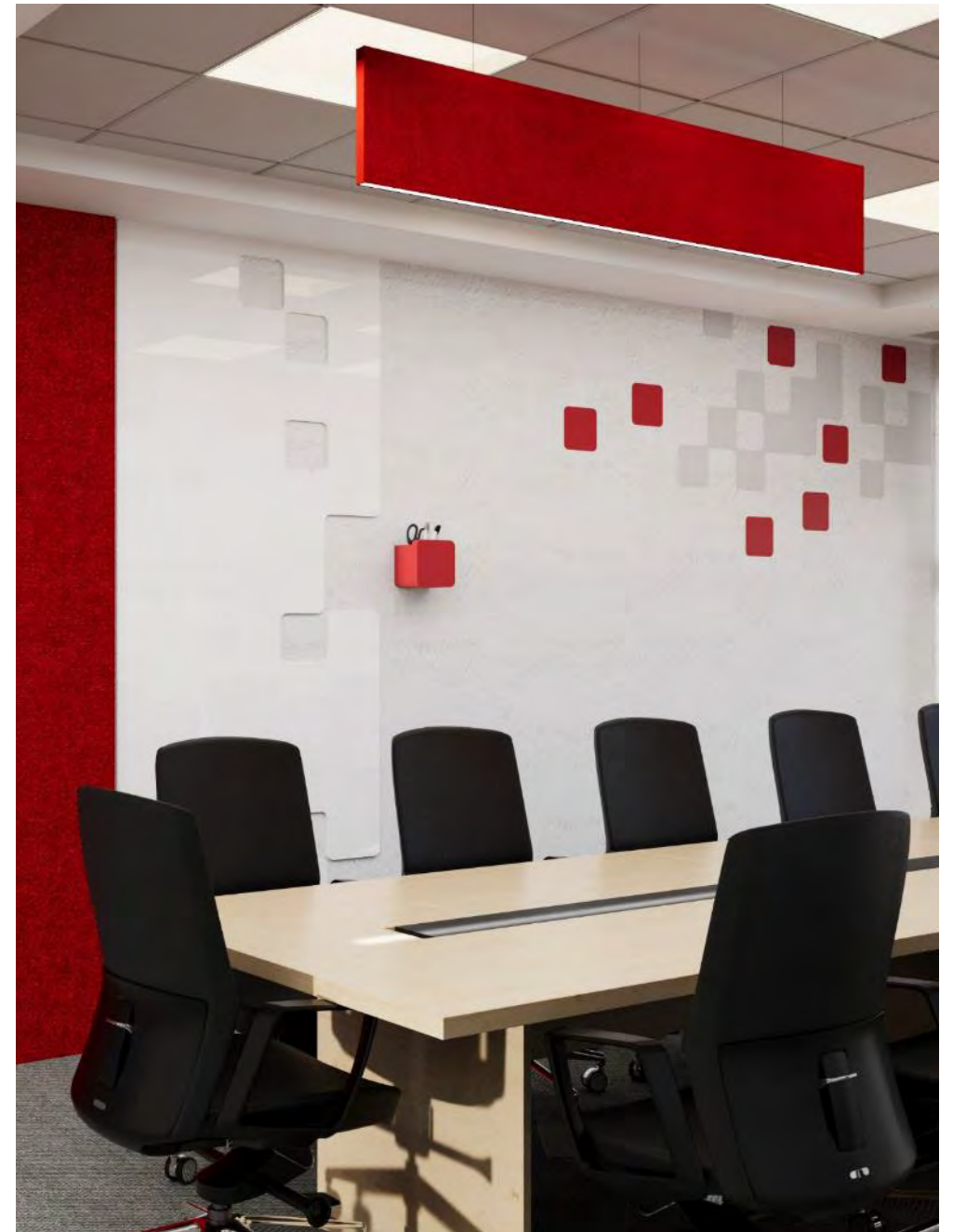






TAMWEELY

Workspaces











# LUFTHANSA



**LOCATION :** CAIRO AIRPORT

**INDUSTRY :** AVIATION

**TYPE :** OFFICE SPACE

**SCOPE :** OFFICE DESIGN

**AREA :** 180 m2

**AIRPORT  
OFFICE**







## LUFTHANSA OFFICE

LOCATION: CAIRO AIRPORT

This project is a full-space redesign that reimagines Lufthansa's office as both high-capacity and high-performance. The layout was optimized to accommodate more employees while maintaining clarity, comfort, and sound purity. Every material and customized detail was selected to reflect the precision and identity of the Lufthansa brand.

















# LUFTHANSA



**LOCATION :** WORLD TRADE CENTRE, CAIRO

**INDUSTRY :** AVIATION

**TYPE :** OFFICE BUILDING

**SCOPE :** DESIGN, RENOVATION & EXECUTION

**AREA :** 1600 m<sup>2</sup> – 4 STORY BUILDING

**CAIRO HQ**



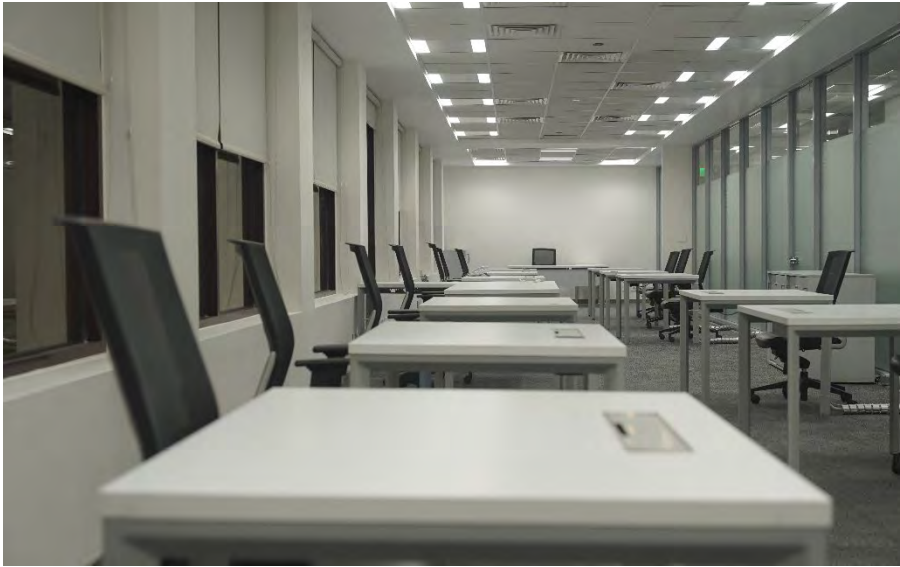
## LUFTHANSA OFFICE

LOCATION: WORLD TRADE  
CENTRE, CAIRO

This project required the design and execution of a space that increases collaboration while staying true to the brand's identity. Key elements include optimized seating arrangements to boost teamwork, acoustic treatments to reduce noise, and practical design features that support a productive work environment.















# UNIPAKNILE FACTORY

**LOCATION :** 6TH OF OCT., GIZA

**INDUSTRY :** PACKAGING

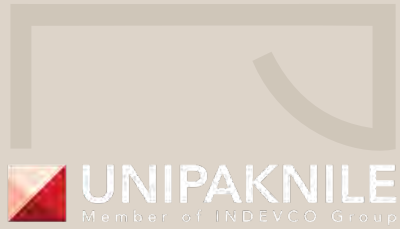
**TYPE :** FACTORY BUILDING

**SCOPE :** DESIGN

**AREA :** 1300 m2







## UNIPAKNILE FACTORY

LOCATION: INDUSTRIAL AREA,  
6TH OF OCTOBER.

In this project, SKETCHURE focused on going beyond just colors, fonts, and logos to visually capture Unipaknile's brand identity. The goal was to reflect their culture, mission, and values, while using design to communicate their identity. The project prioritized showcasing Unipaknile's unique selling proposition and their expertise in folding packaging, all through a creative lens.























document issued by SSM  
in the existence of a company  
it has met the statutory  
requirements by the Companies  
(Act 777).  
the criteria  
requirements of  
a company:

any company has been incorporated  
at least 18 months from  
the date of the ACGS;  
any company has lodged  
Annual Return  
and Financial Statements  
with the SSM;  
any company is not an Exempt Private  
(EPC) certificate;  
any company's status is  
not in the process  
of being wound up or struck off or dissolved;  
any company is not dormant  
in its nature of business;  
any company has a registered address;  
any company or its directors  
do not have any outstanding  
liabilities with SSM; and  
any company or its directors  
are not pending prosecution  
by SSM.





















# UNIMAR



**LOCATION :** NEW CAIRO

**INDUSTRY :** CONSTRUCTION & BUILDING MATERIALS

**TYPE :** ADMINISTRATIVE BUILDING

**SCOPE :** EXECUTION

**AREA :** 800 m2





## UNIMAR

LOCATION: NEW CAIRO, EGYPT

UNIMAR's New Cairo headquarters spans four stories. The ground floor hosts a showroom with vertical metal storage units, while the upper levels offer versatile spaces for meetings and training. The top floor, designed for the Executive Director, is tailored for conferences and seminars. The industrial design features exposed ceilings and dark granite flooring, adding sophistication to the space.







# ARAB AFRICAN INTERNATIONAL BANK

**LOCATION :** CAIRO

**INDUSTRY :** BANKING

**TYPE :** ADMINISTRATIVE RETAIL

**SCOPE :** EXECUTION

**AREA :** 800 m2





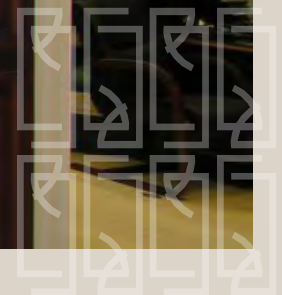


البنك العربي الافريقي الدولي  
arab african international bank

# AAIB

LOCATION: WORLD TRADE  
CENTER, CAIRO

At AAIB, every piece of furniture was carefully crafted, combining quality materials and creative design. Custom furniture here is more than just functional, it adds personality to spaces, creating an environment that feels uniquely alive and purposeful.













# SAVE THE CHILDREN

**LOCATION :** CAIRO

**INDUSTRY :** INTERNATIONAL NGO

**TYPE :** OFFICE SPACE

**SCOPE :** OFFICE DESIGN

**AREA :** 1300 m2



**Save the Children**





**Save the Children**

## **SAVE THE CHILDREN**

LOCATION: MAADI, CAIRO

The Save the Children project aimed to create a workspace that reflects the organization's mission. Vibrant walls tell its story, while each department is uniquely represented to encourage collaboration. A revamped lighting scheme improves the welcoming, adaptable environment, reflecting the organization's commitment to protecting vulnerable children.





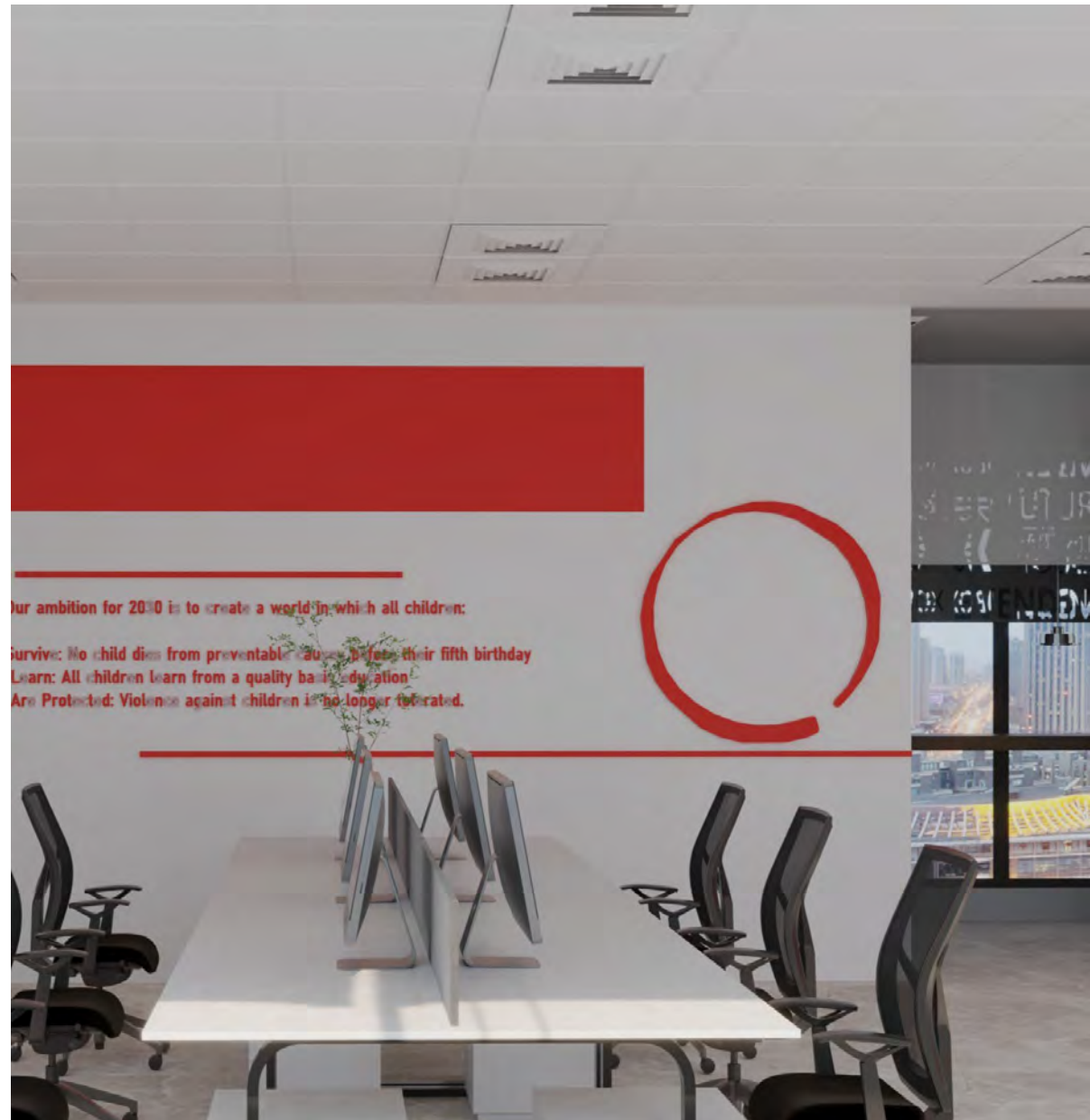


Our ambition for 2030 is to create a world in which all children:

- Survive: No child dies from preventable causes before their fifth birthday
- Learn: All children learn from a quality basic education
- Are Protected: Violence against children is no longer tolerated.



SAVE THE  
CHILDREN





SAVE THE CHILDREN



# GUANGZHOU

FOR INTERNATIONAL SHIPPING

**LOCATION :** CENTRADA PLAZA

**INDUSTRY :** LOGISTICS

**TYPE :** OFFICE SPACE

**SCOPE :** OFFICE DESIGN & FIT-OUT

**AREA :** 70 m2



**GUANGZHOU**

IMPORT AND EXPORT COMPANY







## CENTRADA

LOCATION: 6<sup>TH</sup> OF OCTOBER

This compact office design balances a limited space while accommodating a big team, complete with a private meeting room and CEO office. The design reflects the identity of Guangzhou, creating a functional and brand-appropriate environment.









We create captivating retail spaces  
that impress your customers, and  
elevate the shopping experience, for  
a guaranteed lasting impression



# RETAIL DESIGN



# THE EMIRATES GROUP

**LOCATION :** 5A, NEW CAIRO, EGYPT.

**INDUSTRY :** AVIATION

**TYPE :** RETAIL

**SCOPE :** FURNISHING

**AREA :** 390 m2



## RETAIL STORE



## EMIRATES RETAIL STORE

LOCATION: NEW CAIRO

Reflecting Emirates airline identity through each detail as well as give the feeling that we are flying in the air. The request was to provide also a practical design to make the work environment smoother for the employees, such as adding a white board, storage areas and pin board.













# GENESIS

**LOCATION :** DISTRICT 5, NEW CAIRO, EGYPT.

**INDUSTRY :** AUTOMOTIVE

**TYPE :** SHOWROOM

**SCOPE :** DESIGN & FURNITURE EXECUTION

**AREA :** 1000 m2



**GENESIS**



CAIRO HQ



# GENESIS SHOWROOM

LOCATION: NEW CAIRO

Genesis, under the umbrella of Ghabour Automotive, is opening its first showroom in Egypt. The goal is to create a space that offers a seamless, enjoyable, and comfortable experience for customers. The challenge was blending Genesis' branding guidelines with the latest design trends and technology to craft a unique, modern showroom experience.











GENESIS

WORK IN PROGRESS

186















GENESIS

WORK IN PROGRESS



# SUPER QUALITY

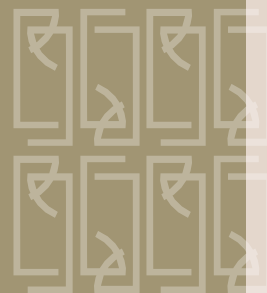
**LOCATION :** WETEX 2024, DUBAI, UAE.

**INDUSTRY :** WATER TREATMENT

**TYPE :** BOOTH EXHIBITION

**SCOPE :** DESIGN

**AREA :** 50-80 m2







## SUPER QUALITY

LOCATION: DUBAI, UAE.

For the Super Quality booth, the design incorporated the brand's distinct colors and visual identity, making sure it stood out among other displays. A lounge setup invited visitors to relax while an interactive screen showcased Super Quality's projects and expertise. We also featured a live display of their RO system, allowing attendees to see the technology in action, making the booth both informative and visually striking.









SUPER  
QUALITY





# DEBENHAMS

**Debenhams**

**LOCATION :** DOWNTOWN MALL, ALEXANDRIA, EGYPT.

**INDUSTRY :** RETAIL

**TYPE :** STORE

**SCOPE :** EXECUTION

**AREA :** 50-80 m2





## DIOR BOOTH

LOCATION: DOWNTOWN MALL,  
ALEXANDRIA

This Dior booth is designed to reflect the brand's luxurious yet modern style. With a mix of classic sophistication and modern elements, it features strategic lighting for product displays, and digital screens to fully engage visitors.









DIOR





# DEBENHAMS

**Debenhams**

**LOCATION :** CFC MALL, CAIRO, EGYPT.

**INDUSTRY :** RETAIL

**TYPE :** STORE

**SCOPE :** EXECUTION

**AREA :** 50-80 m<sup>2</sup>





## DIOR BOOTH

LOCATION: CFC MALL, CAIRO

This Dior booth is a perfect blend of elegance and modern style. With a design that reflects Dior's iconic identity, the space combines sleek design and classic touches. Comfortable seating, focused lighting, and digital displays create an exclusive experience for customers, inviting them into the world of Dior.





DIOR





DIOR





DIOR



# GUERLAIN

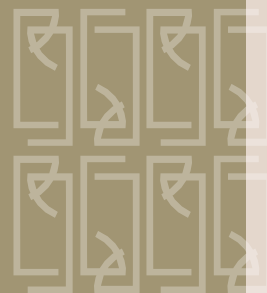
**LOCATION :** SHARM ELSHEIK AIRPORT, EGYPT.

**INDUSTRY :** RETAIL

**TYPE :** STORE

**SCOPE :** EXECUTION

**AREA :** 50-80 m2







## GUERLAIN

LOCATION: SHARM ELSHEIKH  
AIRPORT- DUTY FREE AREA

This Guerlain booth design features a sleek black frame with backlit shelves, highlighting the brand's fragrances in a polished way. Large visuals draw attention to key products, while the well-organized layout ensures an easy browsing experience, all while reflecting Guerlain's elegant and sophisticated image.









# WOLFERS

**LOCATION :** DOWNTOWN MALL, CAIRO, EGYPT.

**INDUSTRY :** RETAIL

**TYPE :** STORE

**SCOPE :** EXECUTION

**AREA :** 50-80 m2





## WOLFERS

LOCATION: DOWNTOWN MALL,  
CAIRO

The objective was to create a sleek, modern, and inviting booth that reflects the brand identity. The dark color scheme with gold accents gives it a touch of elegance, while the prominent display of games suggests a playful and engaging experience.







We design inviting, sophisticated interiors that hold aesthetics, functionality, and guest comfort, making every visit memorable.



# HOTELS & RESTAURANTS DESIGN



# KEMPINSKI

SOMA BAY

**LOCATION :** HURGHADA, EGYPT.

**INDUSTRY :** HOSPITALITY

**TYPE :** RESTAURANT SPACE

**SCOPE :** DESIGN

**AREA :** 150 m2



Kempinski Hotel  
Soma Bay

---

RED SEA EGYPT





Kempinski Hotel  
Soma Bay

RED SEA EGYPT

## KEMPINSKI RESTAURANT

LOCATION: SOMA BAY,  
HURGHADA

The restaurant design blends natural elements with modern comfort, creating a warm, inviting space. It seamlessly combines indoor relaxation with an outdoor-inspired environment, perfect for dining, socializing, or simply enjoying a peaceful moment.













# ROH ALKAHERA

**LOCATION :** KSA

**INDUSTRY :** HOSPITALITY

**TYPE :** RESTAURANT SPACE

**SCOPE :** DESIGN

**AREA :** 250 m2





## ROH ALKAHERA RESTAURANT

LOCATION: KSA

This restaurant with its interior design was meant to reflect the Cairo experience in the heart of Saudi Arabia, that's why we combined different cultural and artistic elements to give the true Cairo vibes.





ROH  
ALKAHERA







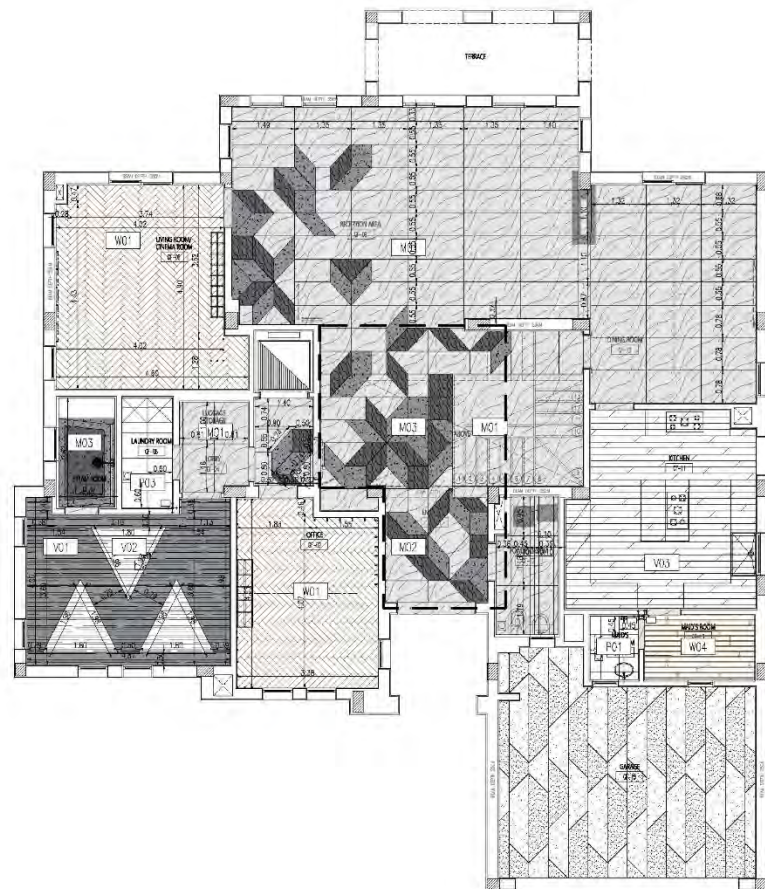


# ARCHITECTURE SHOP DRAWINGS









—ALL NOTES MENTIONED AT GENERAL LEGEND WILL APPLY.

FLOORING MATCH LEGEND		
MATCH	CODE	DESCRIPTION
	P01	PORCELAIN TILES 40x40cm KNOX BATHROOM
	P02	PORCELAIN TILES FLOORING 60x60cm LAUNDRY
	P03	PORCELAIN TILES WALLS 60x60cm LAUNDRY
	P04	PORCELAIN TILES FLOORING 60x60cm TERRACES
	M01	MARBLE WHITE CALCUTTA MARBLE
	M02	MARBLE BLACK SPAIN MARBLE
	M03	MARBLE PETRA NAUTICA MARBLE
	M04	MARBLE PETRA GRAY MARBLE
	W01	ENGINEERED WOOD 1743 BS PARADOX
	W02	ENGINEERED WOOD (WALNUT IMITATIVE 4 PARADOX)
	W03	ENGINEERED WOOD (LIGHT 105-1 ASTORIA 1099BS PARADOX)
	W04	HDF
	C01	CARPET TILES 356 LIGHT GREY FORBO
	V01	VINYL FORBO 13022 BETON
	V02	VINYL FORBO 13022 BETON
	V03	RESILIENT FLOORING

01 FLOORING PLAN  
1:100



SKETCHURE  
MATTER OF INTERIOR

Head office:  
Building 114, Sixth touristic area,  
First 6th of October, Giza Governorate.

Tel: +202/88041120  
Mob: +202/1020005436

Facebook.com/SKETCHURE  
Instagram.com/sketchure\_interior  
www.sketchure.com

Project  
MOUNTAIN VIEW - VILLA

REMARKS:

Owner:

GENERAL NOTES:

DR. MOHAMED SAED

3	rev. 3	
2	rev. 2	
1	rev. 1	
No.	Revisions	Date

Drawn By: Eng. Mohamed Khaled

Checked By: Eng. Ahmed Elshewi Labib

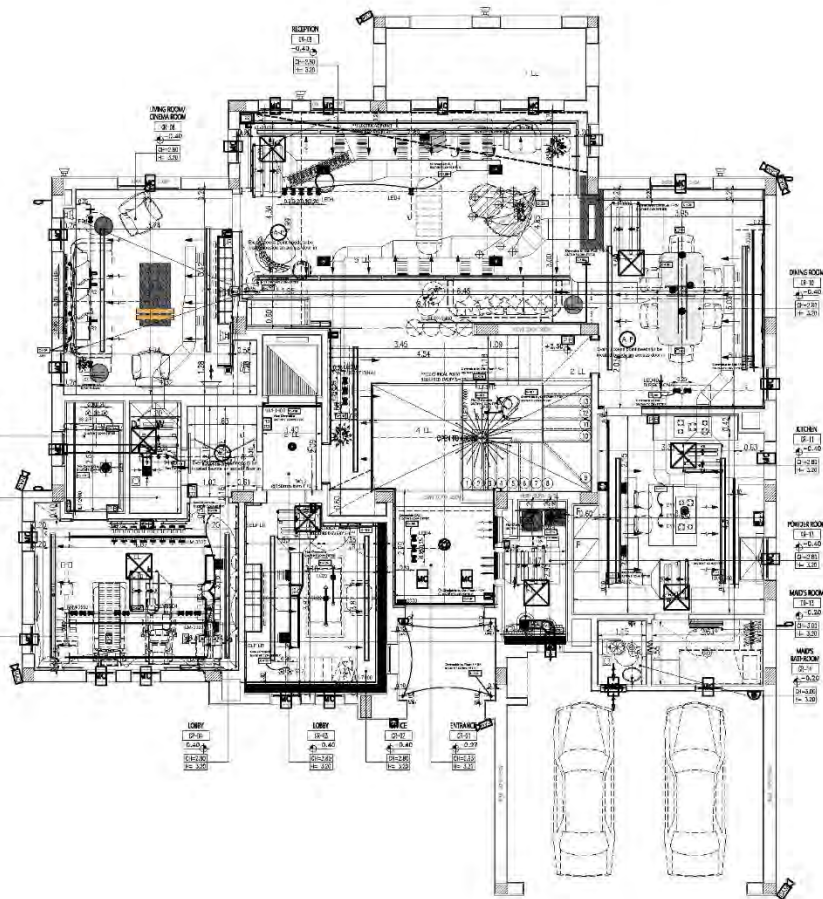
Approved By: Eng. Ezzat Elshewi

Drawing Title:

GROUND FLOOR  
FLOORING PLAN

Drawing No.	Scale	Size
G.F-03	NTS	
	Project Sheet No.	





01 CEILING PLAN  
1:100



Head office:  
Building 114, Sixth touristic area,  
First 6th of October, Giza Governorate.

Tel: +202/38241120  
Mob: +202/0102000435

Facebook.com/SKETCHURE  
Instagram.com/sketchure\_interior  
www.sketchure.com

Project:  
MOUNTAIN VIEW - VILLA

REMARKS

Client:

EXTERNAL NOTES:

DR. MOHAMED SAED

3	rev. 2	
2	rev. 2	
1	rev. 1	
Rev	Revisions	Date

Drawn By: Eng. Mohamed Gabr

Checked By: Eng. Mohamed Gabr

Approved By: Eng. Ezzat Elmaghrabi

Drawing Title:

GROUND FLOOR  
RCP

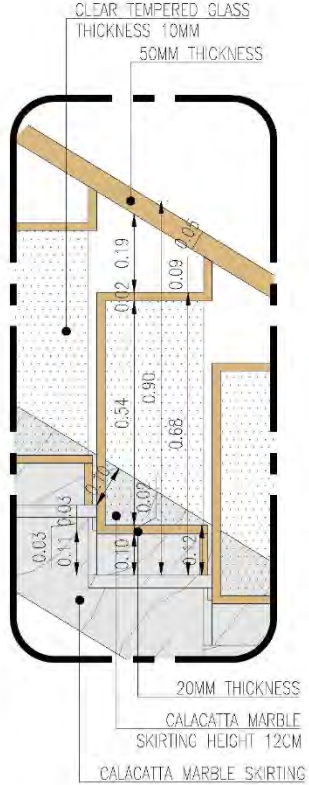
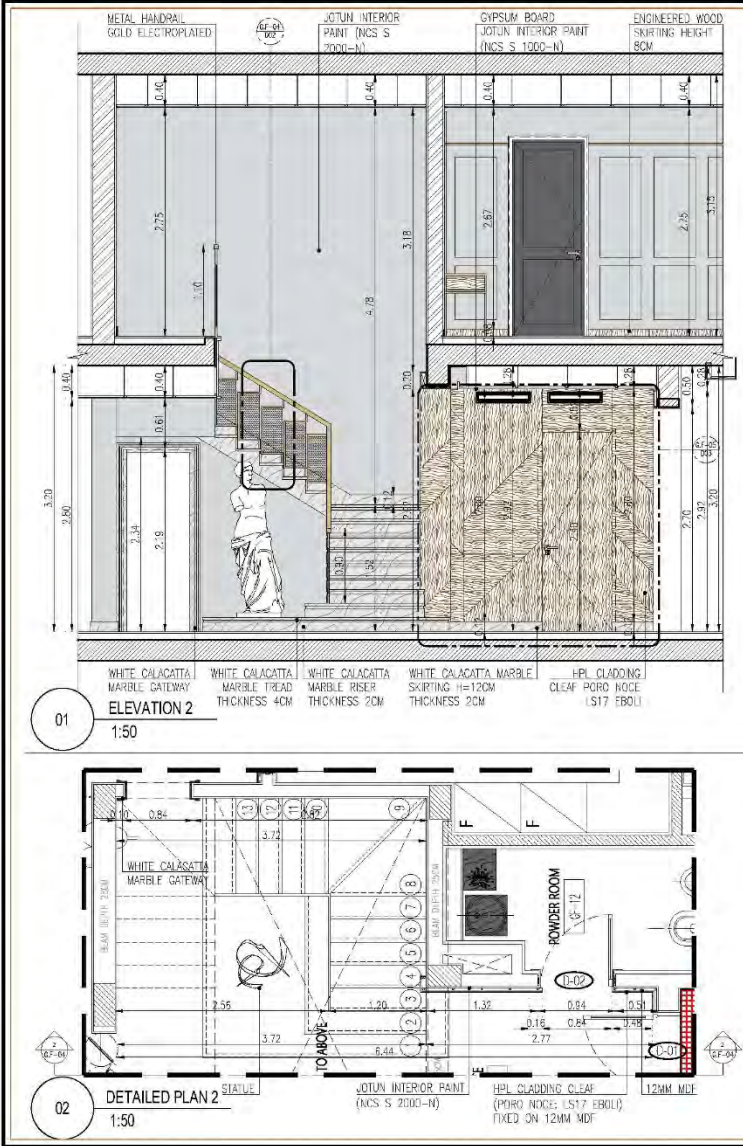
Drawing No.	Scale	Sheet
G.F-04	1:100	
	Project Sheet No.	













SKETCHURE  
HOLDING CO.

Head office:  
Building 114, Sixth touristic area,  
First 8th of October, Giza Governorate.

Tels: +20288241123  
Mob: +2026102000435

Facebook.com/SKETCHURE  
Instagram.com/sketchure\_interior  
www.sketchure.com

Project:  
MOUNTAIN VIEW-VILLA

REMARKS:

Owner:  
DR. MOHAMED SAED

No	Revisions	Date
1	rev. 1	
2	rev. 2	
3	rev. 3	

Drawn By: Eng. Mohamed Elshorouky  
Checked By: Eng. Abd Elkhalim Lashin  
Approved By: Eng. Eslam Elshorouky

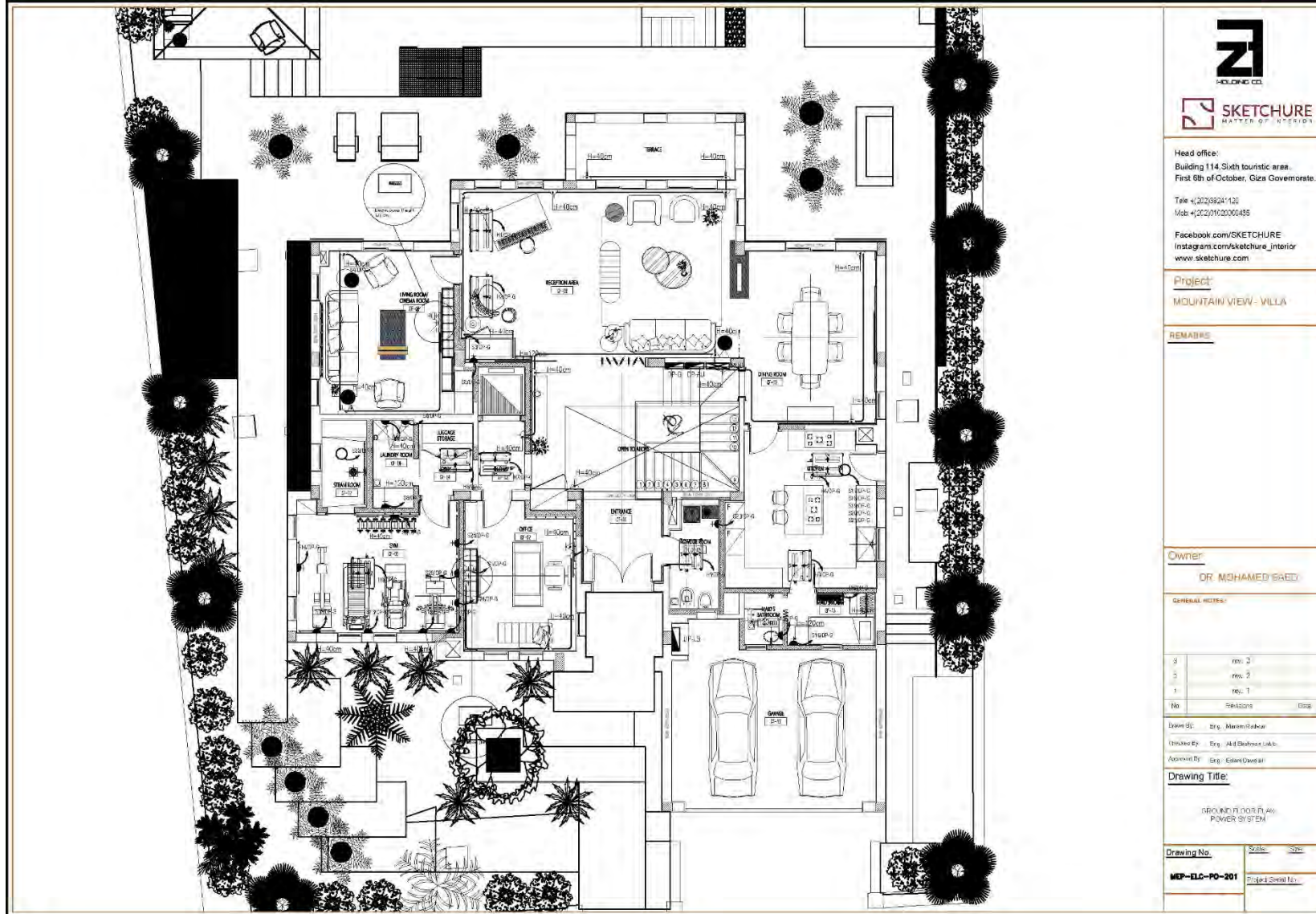
Drawing Title:  
GROUND FLOOR  
ENTRANCE AND STAIRS  
INTERIOR ELEVATION 2  
DETAIL 02

Drawing No.	Scale	Date
GF-LE-04	AS STATED	

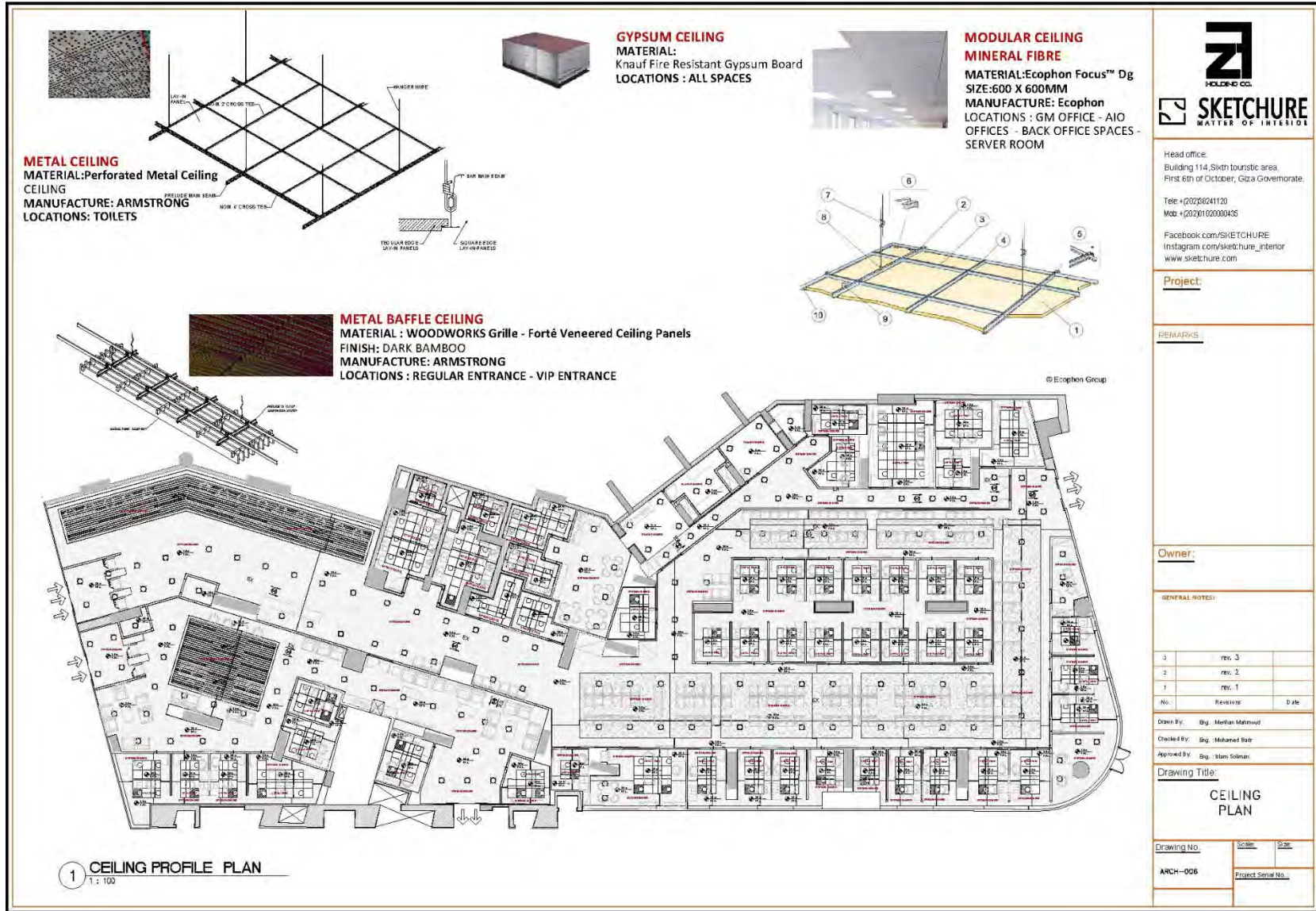












## POWER LEGEND

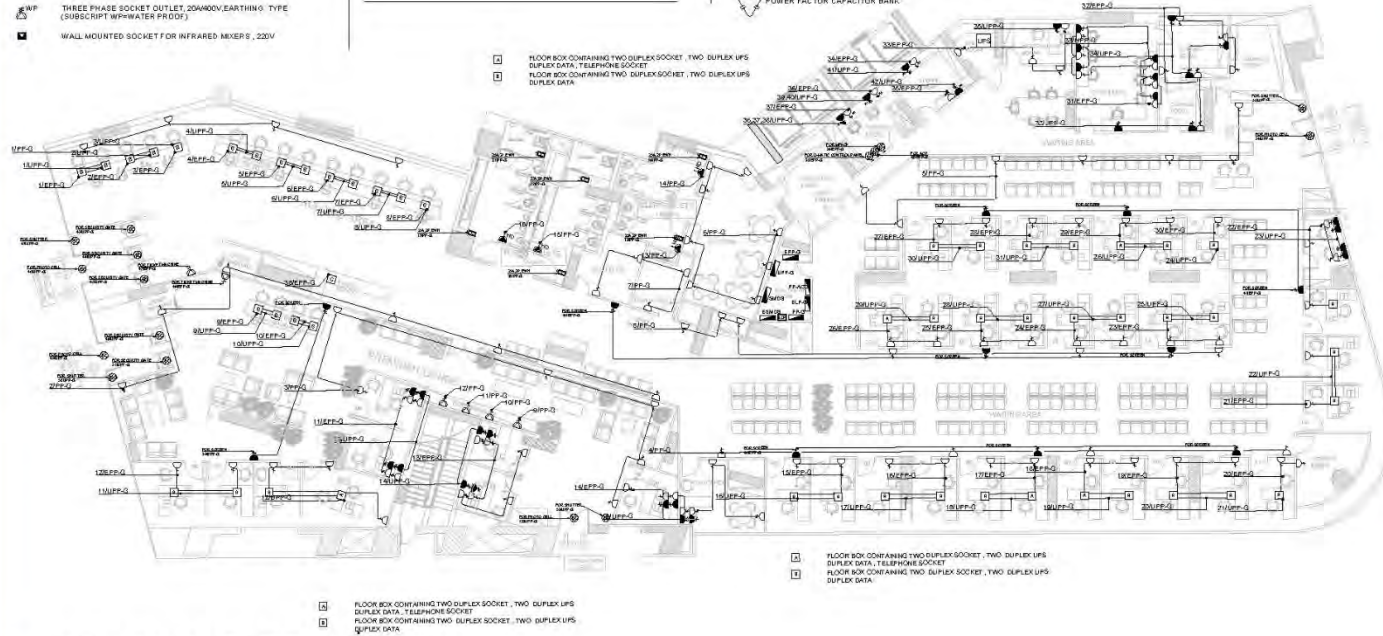
- WALL MOUNTED SINGLE SOCKET OUTLET, 16A, 220V, EARTHING TYPE
- SAME AS ABOVE BUT FED FROM EMERGENCY SOURCE
- SAME AS ABOVE BUT FED FROM UPS
- WALL MOUNTED SINGLE SOCKET OUTLET, 16A, 220V, EARTHING TYPE (SUBSCRIPT WFWATER PROOF)
- WALL MOUNTED SINGLE SOCKET OUTLET, 16A, 220V, EARTHING TYPE (SUBSCRIPT REF+REF REGULATOR)
- WALL MOUNTED DUPLEX SOCKET OUTLET, 16A, 220V, EARTHING TYPE
- SAME AS ABOVE BUT FED FROM EMERGENCY SOURCE
- SAME AS ABOVE BUT FED FROM UPS
- MOUNTED DUPLEX SOCKET OUTLET, 16A, 220V, EARTHING TYPE (SUBSCRIPT WFWATER PROOF)
- WALL MOUNTED DUPLEX SOCKET OUTLET, 16A, 220V, EARTHING TYPE (SUBSCRIPT TV+TELEVISION)
- CEILING OUTLET, 16A, 220V, EARTHING TYPE
- WALL MOUNTED POWER SOCKET OUTLET, 20A, 220V, EARTHING TYPE
- WALL MOUNTED POWER SOCKET OUTLET, 20A, 220V, EARTHING TYPE (SUBSCRIPT WFWATER PROOF)
- WALL MOUNTED SINGLE SOCKET OUTLET, 20A, 220V, WITH GROUND TYPE FOR HAND DRYER
- THREE PHASE SOCKET OUTLET, 20/30/40V, EARTHING TYPE (SUBSCRIPT WFWATER PROOF)
- WALL MOUNTED SOCKET FOR INFRARED MIXER, 220V

## POWER LEGEND

- DISCONNECT SWITCH SINGLE PHASE, FUSED UNLESS NOTED, NUMBER OF POLES AND RATINGS AS INDICATED ON PLAN, WITH PILOT LIGHT
- SAME AS ABOVE BUT (WFWATER PROOF)
- DISCONNECT SWITCH THREE PHASE, FUSED UNLESS NOTED, NUMBER OF POLES AND RATINGS AS INDICATED ON PLAN, WITH PILOT LIGHT
- SAME AS ABOVE BUT (WFWATER PROOF)
- ELECTRICAL OUTLET FED FROM NORMAL SOURCE
- ELECTRICAL OUTLET FED FROM EMERGENCY SOURCE
- SWITCH WITH PILOT LAMP, 220V, 1PH, 60HZ
- AC - AIR CONDITION
- EWH - ELECTRIC WATER HEATER
- ER - ELECTRIC RANGE
- WM - WASHING MACHINE
- HOME RUN FOR NORMAL SOURCE FEEDING CIRCUIT
- HOME RUN FOR EMERGENCY SOURCE FEEDING CIRCUIT
- HOME RUN FOR UPS SOURCE FEEDING CIRCUIT
- WIRING FOR UPS FEEDING SOURCE CIRCUIT
- WIRING FOR NORMAL FEEDING SOURCE CIRCUIT
- WIRING FOR EMERGENCY FEEDING SOURCE CIRCUIT

## DISTRIBUTION & CONTROL PANELS

- MOTOR CONTROL CENTER
- LIGHT CONTROL PANEL
- DIMMER CONTROL PANEL
- UN-INTERRUPTIBLE POWER SUPPLY
- MOTOR CONTROL PANEL
- AUTOMATIC TRANSFER SWITCH RATINGS AS INDICATED ON THE DRAWINGS
- MAIN DISTRIBUTION PANEL
- SUB MAIN DISTRIBUTION PANEL
- DISTRIBUTION, LIGHT, OR POWER PANEL
- FLUSH MOUNTED SMALL PANEL
- GENERATOR (RATINGS AS INDICATED ON THE DRAWINGS)
- DISTRIBUTION TRANSFORMER (RATINGS AS INDICATED ON THE DRAWINGS)
- AMMETER
- VOLTMETER
- INDICATION LAMP
- POWER FACTOR CAPACITOR BANK



## POWER OUTLET PLAN

1 : 100



**SKETCHURE**  
MATTER OF INTERIOR

Head office:  
Building 114, Sixth touristic area,  
First 6th of October, Giza Governorate.

Tele + (202) 8241120  
Mob + (202) 912300405

Facebook.com/SKETCHURE  
Instagram.com/sketchure\_interior  
www.sketchure.com

## Project:

## REVISIONS

## Owner:

## INTERNAL NOTES:

3	rev. 3	
2	rev. 2	
1	rev. 1	
No.	Revisions	0 sh

Drawn By: Eng. Merhan Mahmoud

Checked By: Eng. Mohamed Badr

Approved By: Eng. Wam Soliman

## Drawing Title:

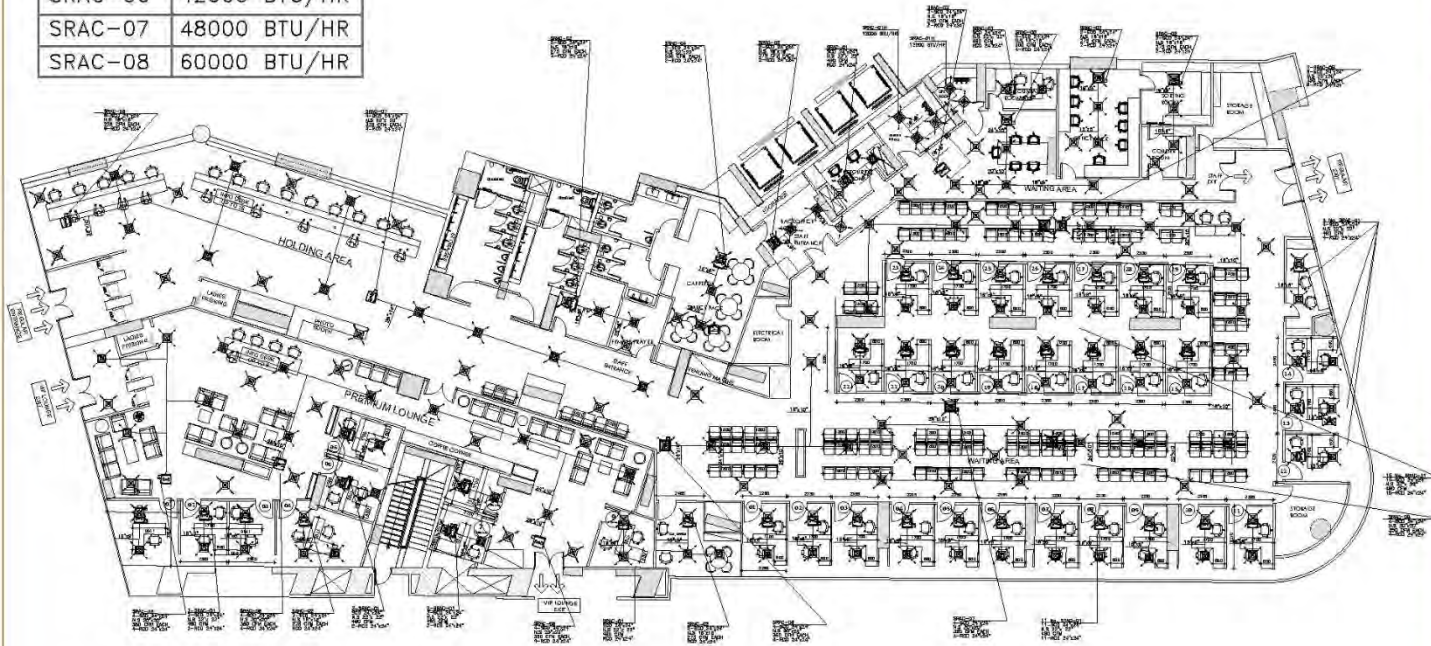
## POWER OUTLET PLAN

Drawing No.	Scale	Size
MEP-ELC-PO-101		
Project Serial No.		





SRAC-01H	12000 BTU/HR
SRAC-02H	18000 BTU/HR
SRAC-01	12000 BTU/HR
SRAC-02	18000 BTU/HR
SRAC-03	24000 BTU/HR
SRAC-04	30000 BTU/HR
SRAC-05	36000 BTU/HR
SRAC-06	42000 BTU/HR
SRAC-07	48000 BTU/HR
SRAC-08	60000 BTU/HR



1 HVAC PLAN-DX&AIR OUTLET  
1 : 100



Head office:  
Building 114, Sixth touristic area,  
First 6th of October, Giza Governorate.  
Tel: +2028241120  
Mob: +2020102000045  
Facebook.com/SKETCHURE  
Instagram.com/sketchure\_interior  
www.sketchure.com

Project:

Item No.:

Owner:

GENERAL NOTES:

3	rev. 3	
2	rev. 2	
1	rev. 1	
No.	Revisions	Date

Drawn By: Eng. -Medhat Mahmoud

Checked By: Eng. -Muhammad Bach

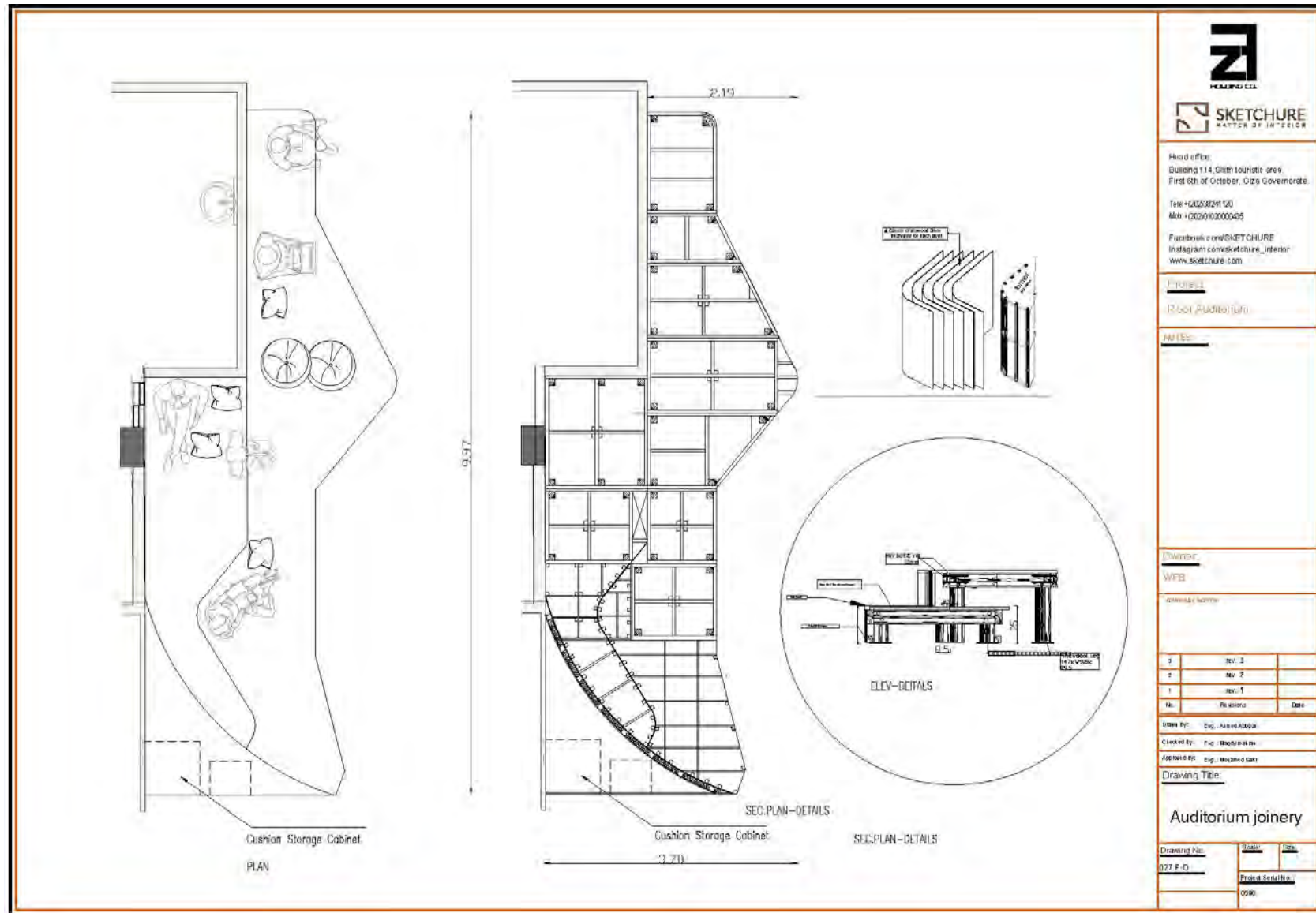
Approved By: Eng. -Islam Soliman

Drawing Title:

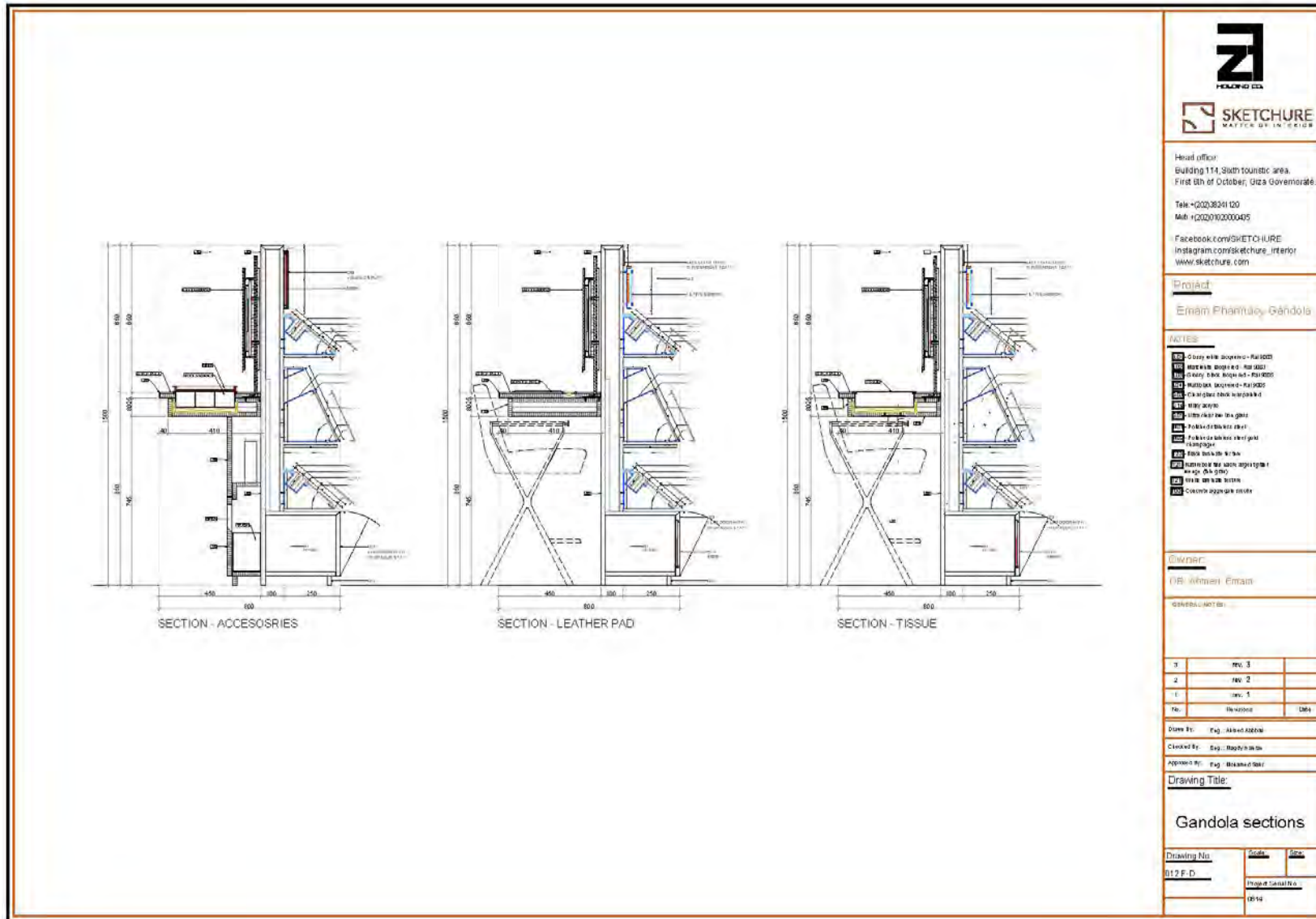
HVAC PLAN  
DX&AIR OUTLET

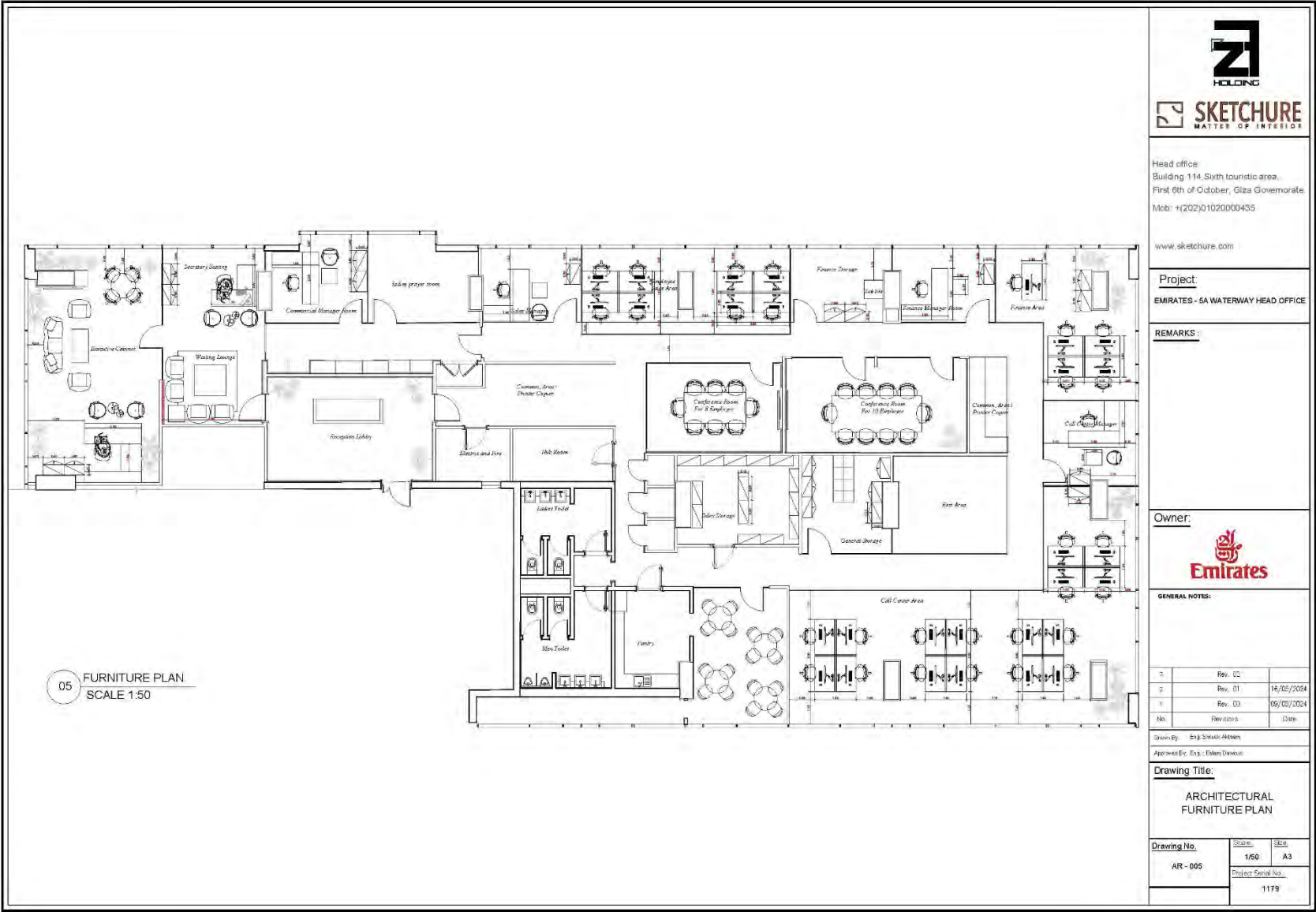
Drawing No.	Scale	Sheet
MEP-HVAC-102		
	Project Detail No.	



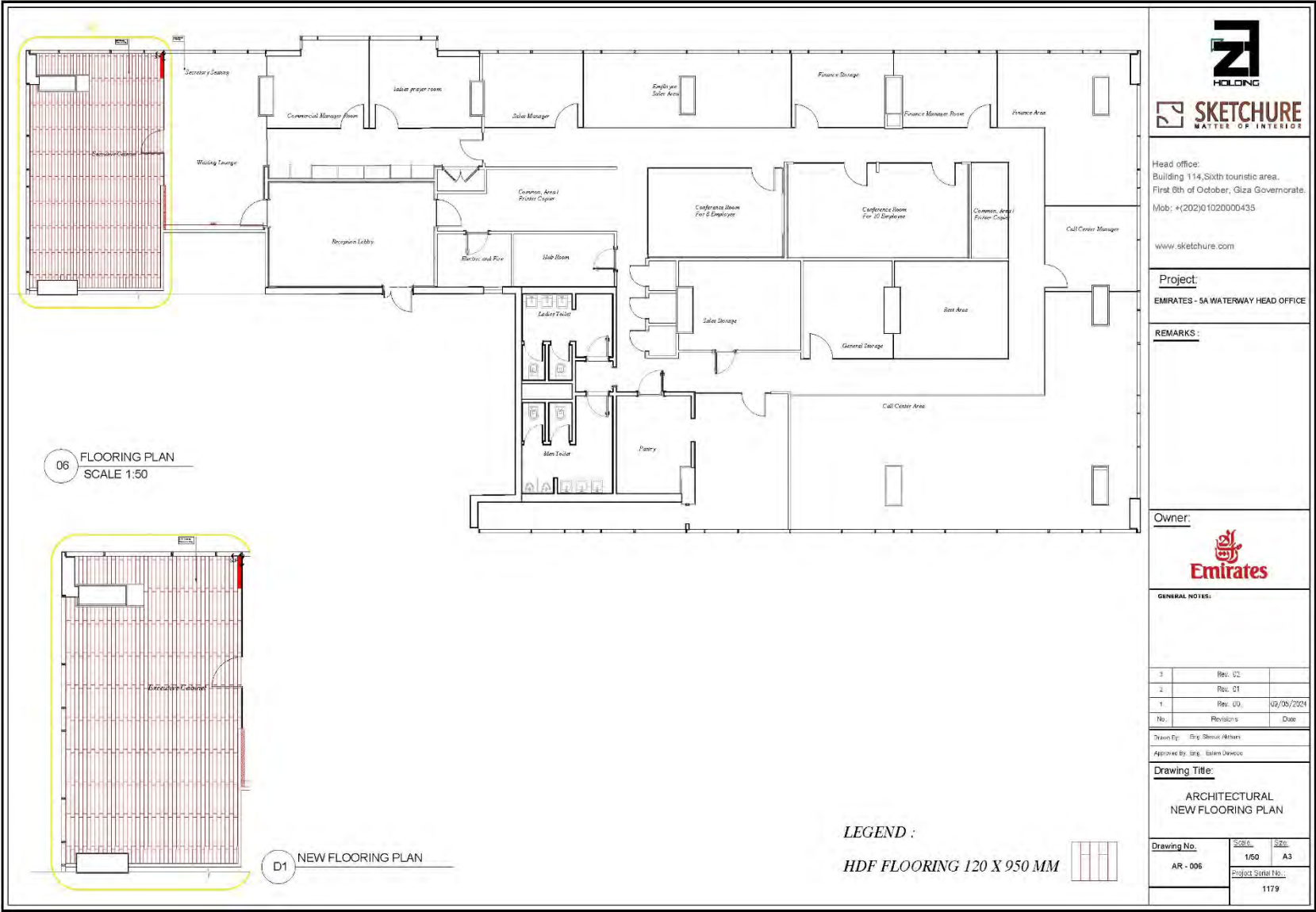






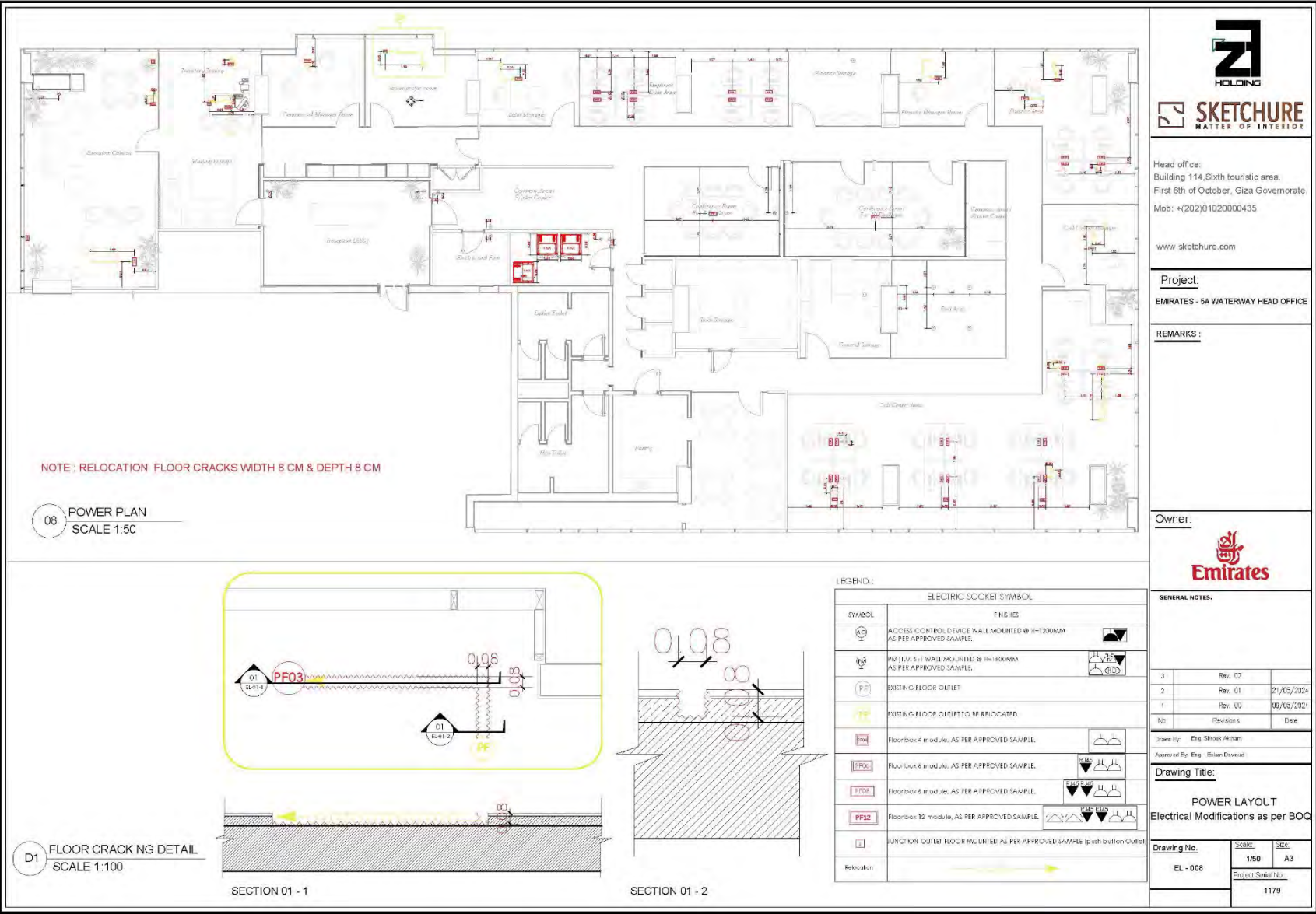


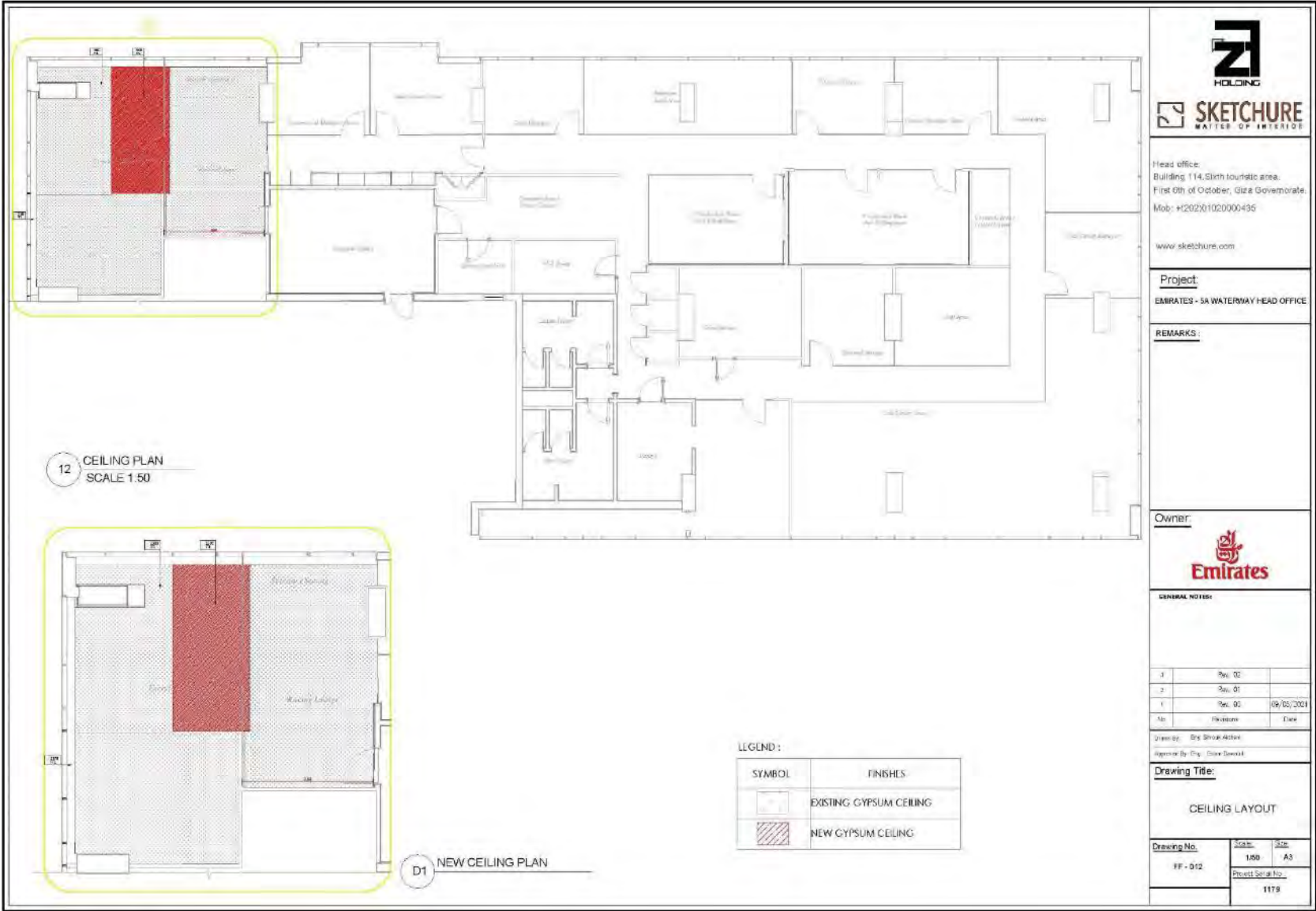
















# THANK YOU

Building #114, 6th touristic zone,  
6th of October, Giza, Egypt.  
(+2) 010 20000435

info@sketchure.com  
**SKETCHURE.COM**

WestBurry Commercial Tower,  
Business Bay, Dubai, UAE  
(+971) 56 7305059